



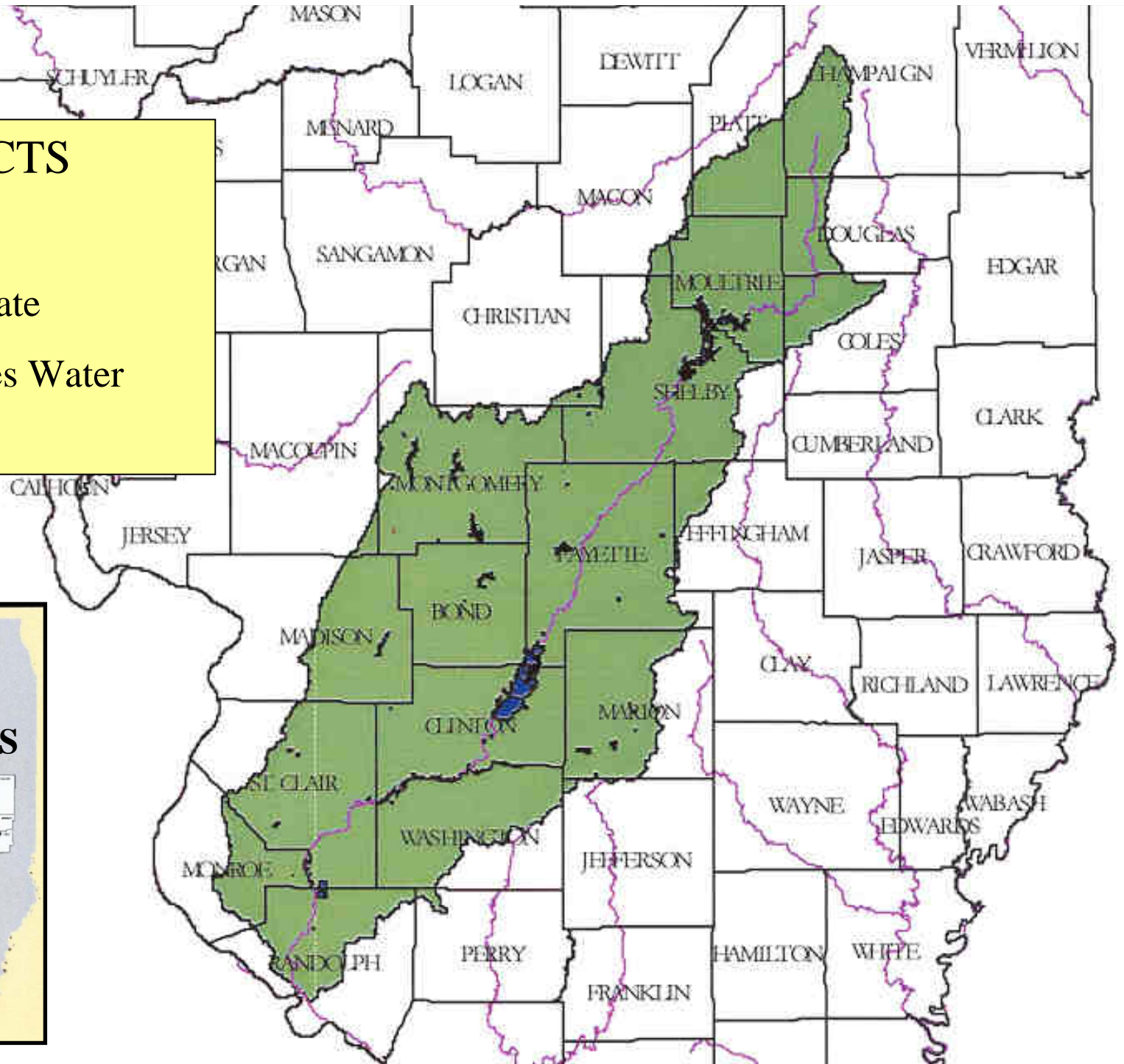
Kaskaskia River Watershed

Kaskaskia River Basin Initiative – Through Locally Led Efforts

**Ed Weilbacher, Coordinator, USDA-NRCS
Providing technical assistance to the
Southwestern Illinois RC&D, Inc.**

FACTS

- 22 Counties
- 10.2% of State
- 37,000 Acres Water
- 295 Miles



Early History

- KVA - Kaskaskia Valley Association
 - Formed in 1933 (war delayed implementation)
 - Flood Control only purpose
 - Carlyle Lake
 - Completed in 1965
 - Lake Shelbyville
 - Completed in 1970
 - Kaskaskia Navigation Project
 - Completed in 1974



Navigation Project

Early Local Groups

- ORBC - Okaw River Basin Coalition
 - Established 1974
- Mid Kaskaskia River Basin Coalition
 - Created shortly after ORBC
- Kaskaskia Industrial Dev. Corp. (KIDC)
 - Formed to promote economic development
 - Recently disbanded and merged with LKSI
- SWI RC&D created in 1987
- Lower Okaw River Basin Coalition (LORBC)

An aerial photograph showing a wide, brown river meandering through a vast, dense green forest. The river flows from the upper right towards the lower left, with several meanders. The forest is thick and covers most of the landscape. In the far distance, some open fields and buildings are visible under a clear sky.

Watershed

Moment

1993



Cape May Warbler



Prothonotary Warbler

Internationally - Decline of Neo-tropical populations



Indigo Bunting

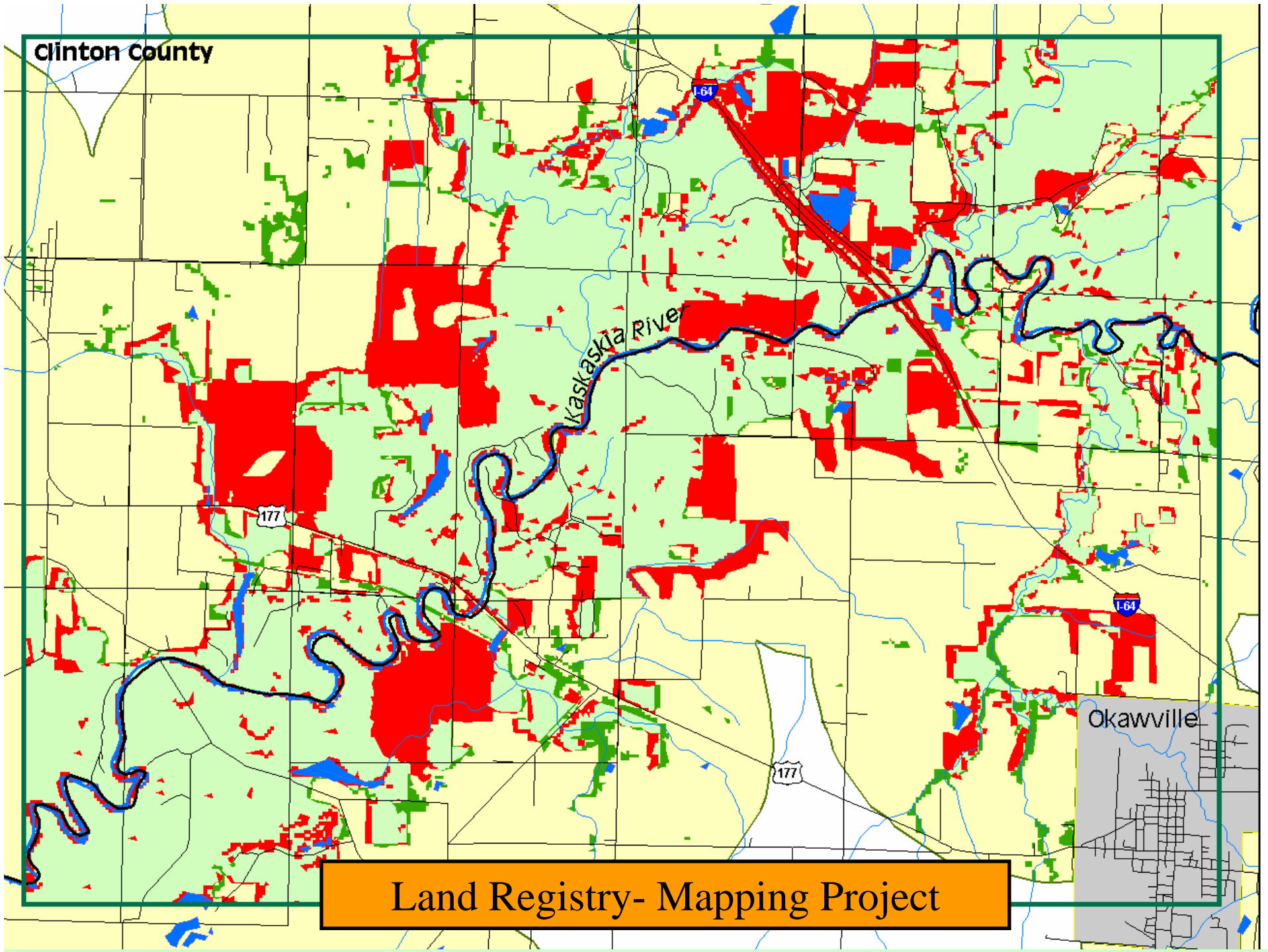
Forest Fragmentation

Largest Contiguous
Bottomland
Hardwood Forest In
Illinois



Scarlet Tanager

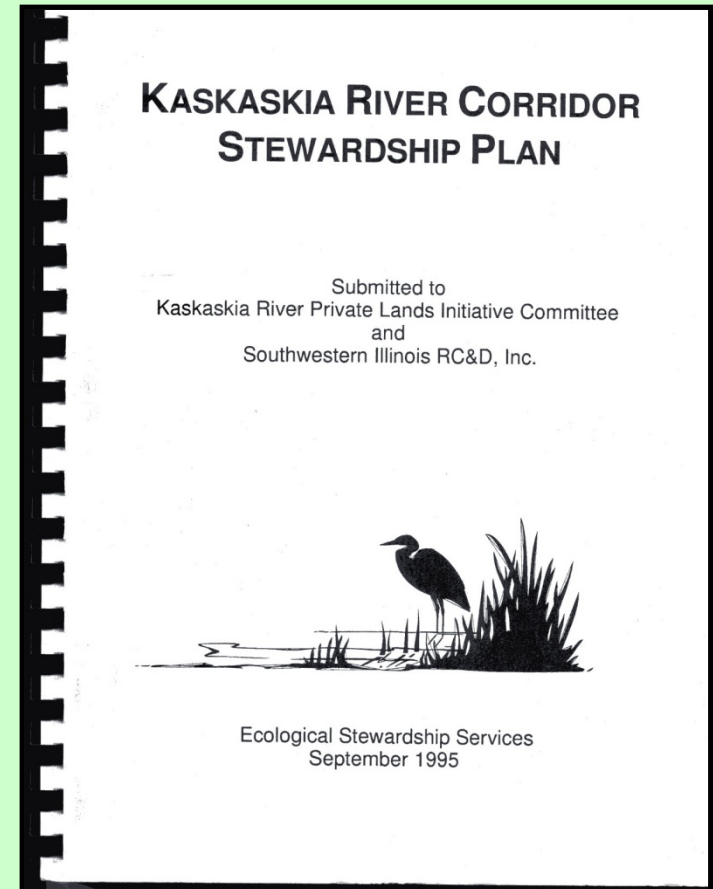
Clinton County



Land Registry- Mapping Project

Cooperative Conservation Solutions

- KRPLI - Kaskaskia Resources/Private Lands Initiative (coordinated by SWI RC&D)
 - Prepared Stewardship Plan in 1995 response to FWS Refuge Proposal
- OKAW - Original Kaskaskia Area Wilderness
 - formed as a result of the KRPLI Stewardship Plan



An aerial photograph showing a wide, brown river meandering through a vast, dense green forest. The river flows from the top center towards the bottom of the frame, with several large loops and bends. The surrounding land is almost entirely covered in trees, with some small clearings and structures visible in the distance. The sky is a pale, clear blue.

Watershed

Moment # 2

1997

American Heritage Rivers Proposal and Future Action

- Application prepared 1997
- Local opposition
 - against it to be against it
 - Red Bud Meeting; threw the reporters out
 - What the h_ _ _ are *STAKEHOLDERS*
 - 2 year moratorium on application
 - Early beginnings of the creation of both KWA and Lower Kaskaskia Stakeholders Inc. (LKSI)

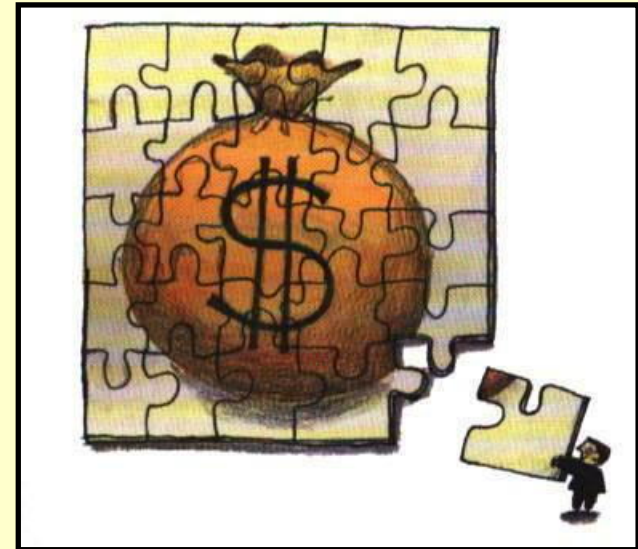


Lower Kaskaskia Stakeholders, Inc.

- Lower group forms as a group of groups
- Name of Org - from a word feared by locals
- Meets monthly
- Average attendance between 30 and 50
- Holds annual barge tour
- Service Projects
 - Floating “Do-Do”
 - River Clean-up with IEPA support
 - Tree Stabilization and other projects

State and Federal Agencies Come Together with KWA

- WRDA-Navigation Project
 - Fish and Wildlife in 1996
 - Recreation in 2000
- Limited resources
- Sec. 1135
- Recreational Lakes Study
- Erosion Studies (Lower and Upper)

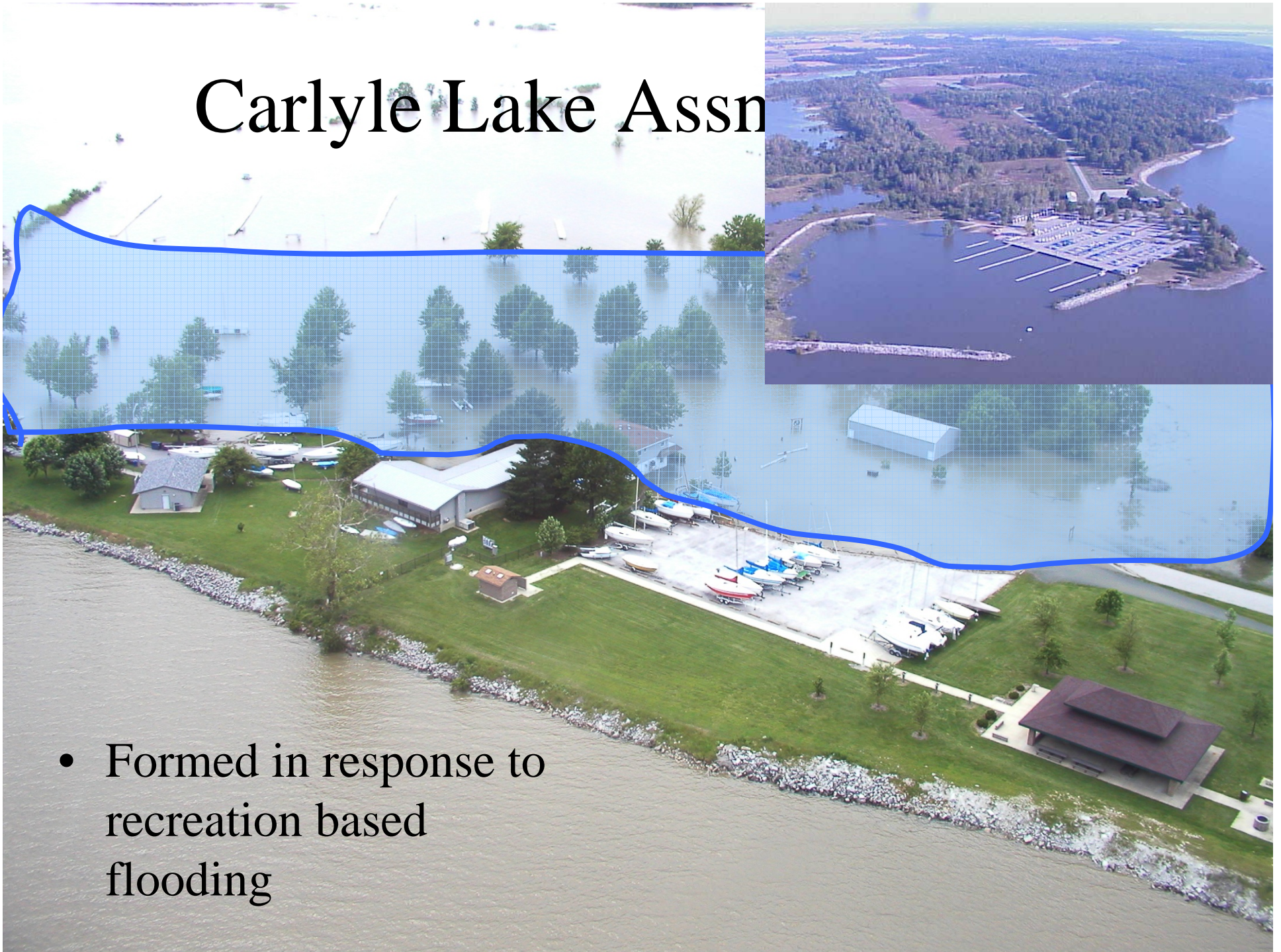


KWA Formalizes

- Begin meeting as a group in 1998
- Formalizes KWA in July 2002
- Education and Communication
- Represents the Whole Watershed
- Holds Annual Summits since 2000
- Creates 4 sub-basins for board participation
- Prepared Issues and Opportunities Report



Carlyle Lake Assn



- Formed in response to recreation based flooding

Road underwater to Eldon Hazlet

Club House

Dam West
Parking Lot

Boat Ramp

Normal Pool Surface Area 26,000 ac

Flood 2002 (Record Pool) 52,000 ac



Lake Shelbyville Flood May 19th 2002 - 618.01

- Day use, beaches, boat ramps & trails closed
- Roads and Parking lots underwater
- Sewage treatment facilities impacted
- Wildlife management severely diminished

C2000 Ecosystems ACCOMPLISHMENTS

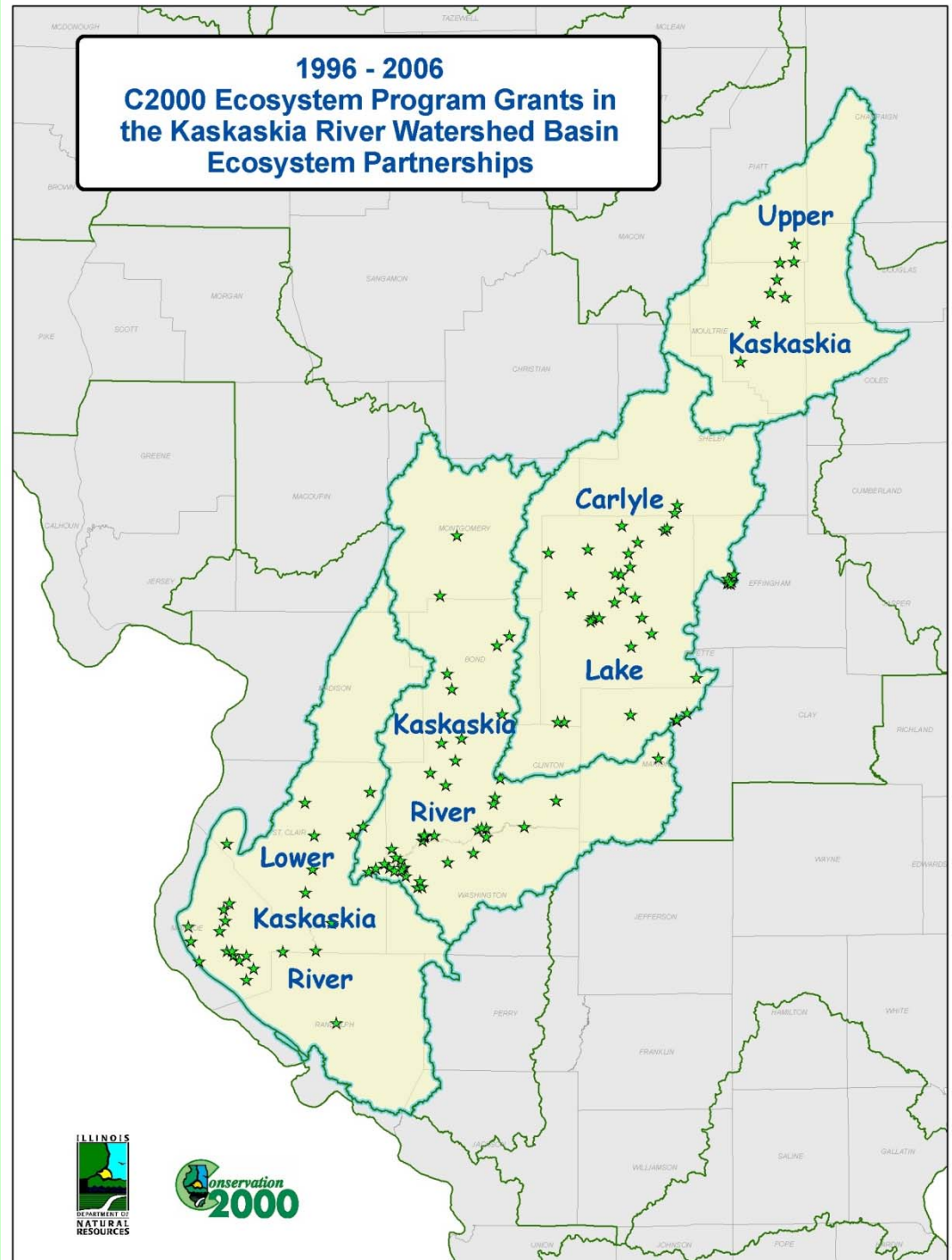
Habitat Restoration:

- Forest 2,262 acres
- Prairie 1,894 acres
- Wetland 740 acres
- Riparian 43 acres
- Streams 6,500 feet

Program Funding:

- 117 Program Grants
- C2000 Funds \$3,500,337
- Matching Funds \$3,174,417

Total Project Cost \$6,674,754



TRUST

SUPPORT

Diversity

Tolerance

“A Partnership Is...

the relationship between people
with a cause,

in which each has equal status,

a certain independence, and

obligation to each other.”

COOPERATION

COMMITMENT


COMMITMENT

COMMUNICATION

Watershed Issues and Opportunities Report


4 Page Color Brochure

Kaskaskia River Watershed




An Ecosystem Approach to Issues & Opportunities

KASKASKIA RIVER WATERSHED
ECOSYSTEM RESTORATION & RESOURCE DEVELOPMENT INITIATIVE

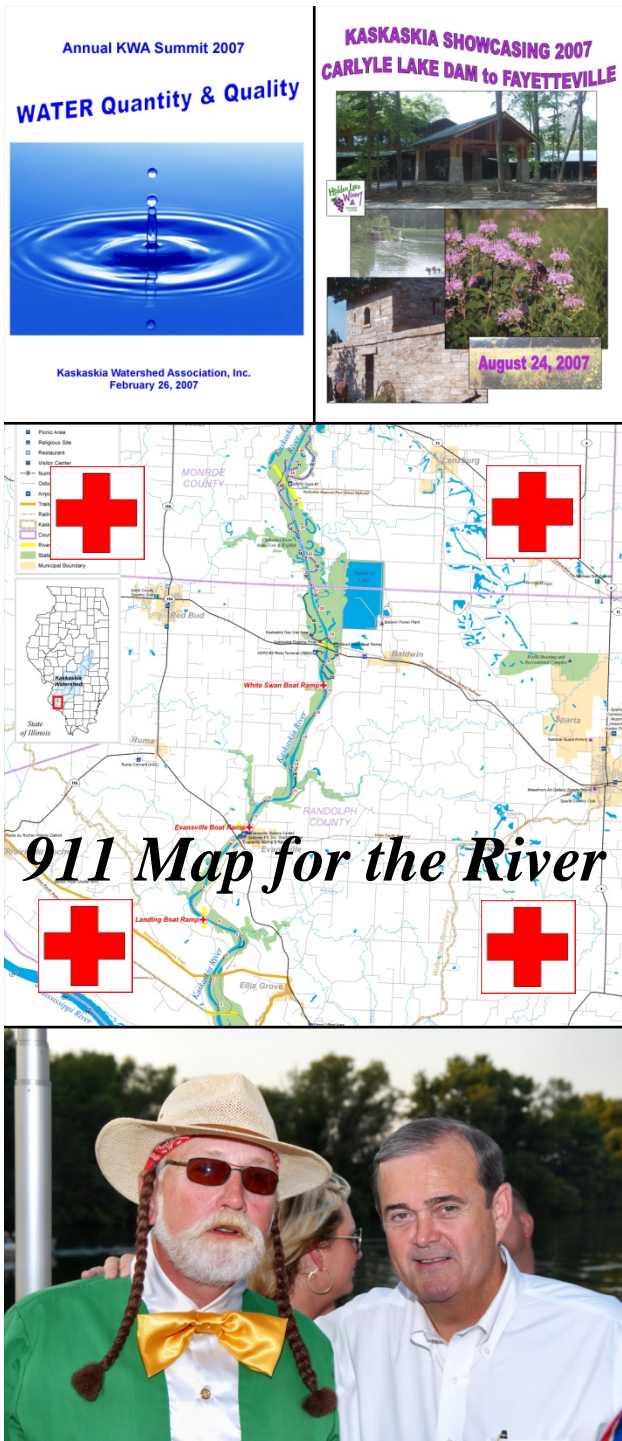


A cooperative effort to manage the watershed in a sustainable manner that will promote, but not abuse, the natural resources, and also encourage additional recreational opportunities, new economic development, implementation of sound agricultural practices and the restoration of natural ecosystems.



Recent Activities

- CORPS recognizes Kaskaskia in its 5 year Strategic Plan
- Summit held Feb. 27, 2007
 - Focused on Water Quality and Quantity
- Showcasing at Hidden Lake Winery
- \$60,000 Prairie State Energy Settlement
- 911 Signage and 7 Ambulance/Helicopter points
- LKSI Holds Annual Barge Trip



2007 Showcase at Hidden Lake Winery





Informational Stops

HOLE IN THE DOUGHNUT: Progress in the Venedy Area



Tour Overview



- Approximate Forest Edge
- Enrolled in "Hole in the Doughnut" Program
- Eligible Land (example locations)
- "Holes" filled through other conservation programs
EG: CRP, FDA, AFW, etc

Southern Flatwoods

Rare Forest Type



Corridor contains 42% of high quality Southern Flatwoods left in Illinois
Photo: Summer aspect, Big Open Woodland, Venedy

Southern Flatwoods at a Glance

Total Corridor Forest Acreage: 46,650
Southern Flatwoods Acreage: unknown but probably >1,000 ac
Block Size: known tracts up to 100 ac

Restoration of all Southern Flatwoods in the Kaskaskia Corridor is currently being funded through a grant from EDNR.

High Quality
Six high quality flatwoods have been recognized in the Kaskaskia Corridor to date. (Washington Co., Jackson Slough Woodland, Jackson Slough Woodland, Everglades Woodland, Acorn Acres - Woodland, Big Open Woodland - Woodland)

EDNR, in partnership with the Illinois Department of Natural Resources, is currently conducting a survey of the remaining Southern Flatwoods in the Kaskaskia Corridor.



WRDA support for Kaskaskia Watershed

- **COMPREHENSIVE WATERSHED PLAN**

- to
- tra
- to
- an
- Ka
- to
- p
- to
- r
- to
- b
- n
- to
- landc



is a vital

bank erosion,
the entire

habitat for

r agriculture,
ies;

annels and
with the

communities,
ation facilities.

To the Future

- Still Seeking CREP designation
- WRDA support for Kaskaskia Watershed
- Revision of the Work Plan
- Implementation of Priority Projects
- Continued support and utilization of the IDNR Partners for Wildlife Program
- Support for I-Space
- Support of Statewide SAFE Proposal

US Rt. 150





Lake Shelbyville

Carlyle Lake





Cape May Warbler



Prothonotary Warbler

LARGEST CONTIGUOUS BOTTOMLAND HARDWOOD FOREST



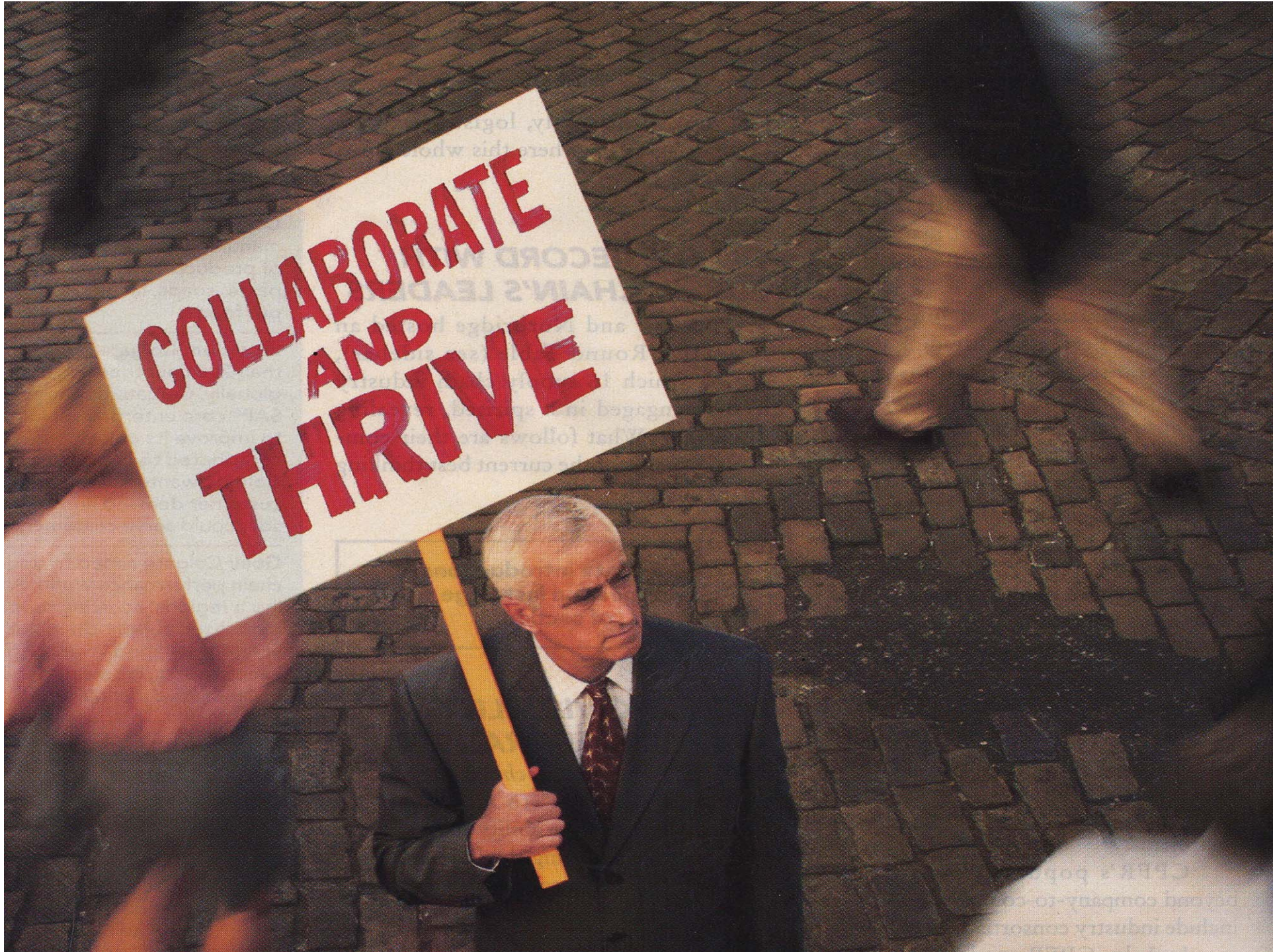
Indigo Bunting



Scarlet Tanager

Kaskaskia Navigation Project





**COLLABORATE
AND
THRIVE**



Thank You

Ed Weilbacher, Coordinator
USDA NRCS assisting the Southwestern Illinois RC&D, Inc.
Mascoutah, IL
618 566-4451 ext. 11
ed.weilbacher@il.usda.gov