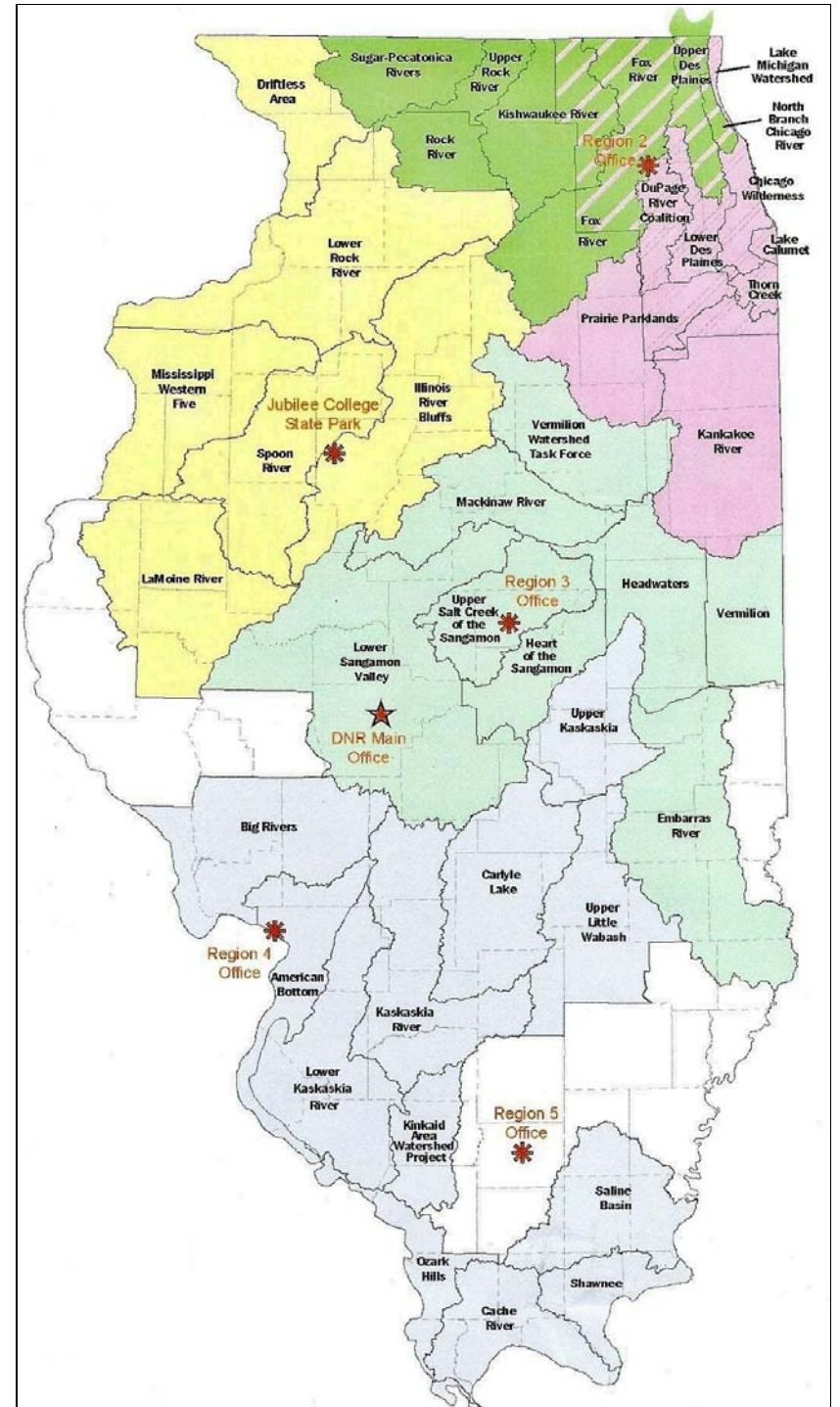
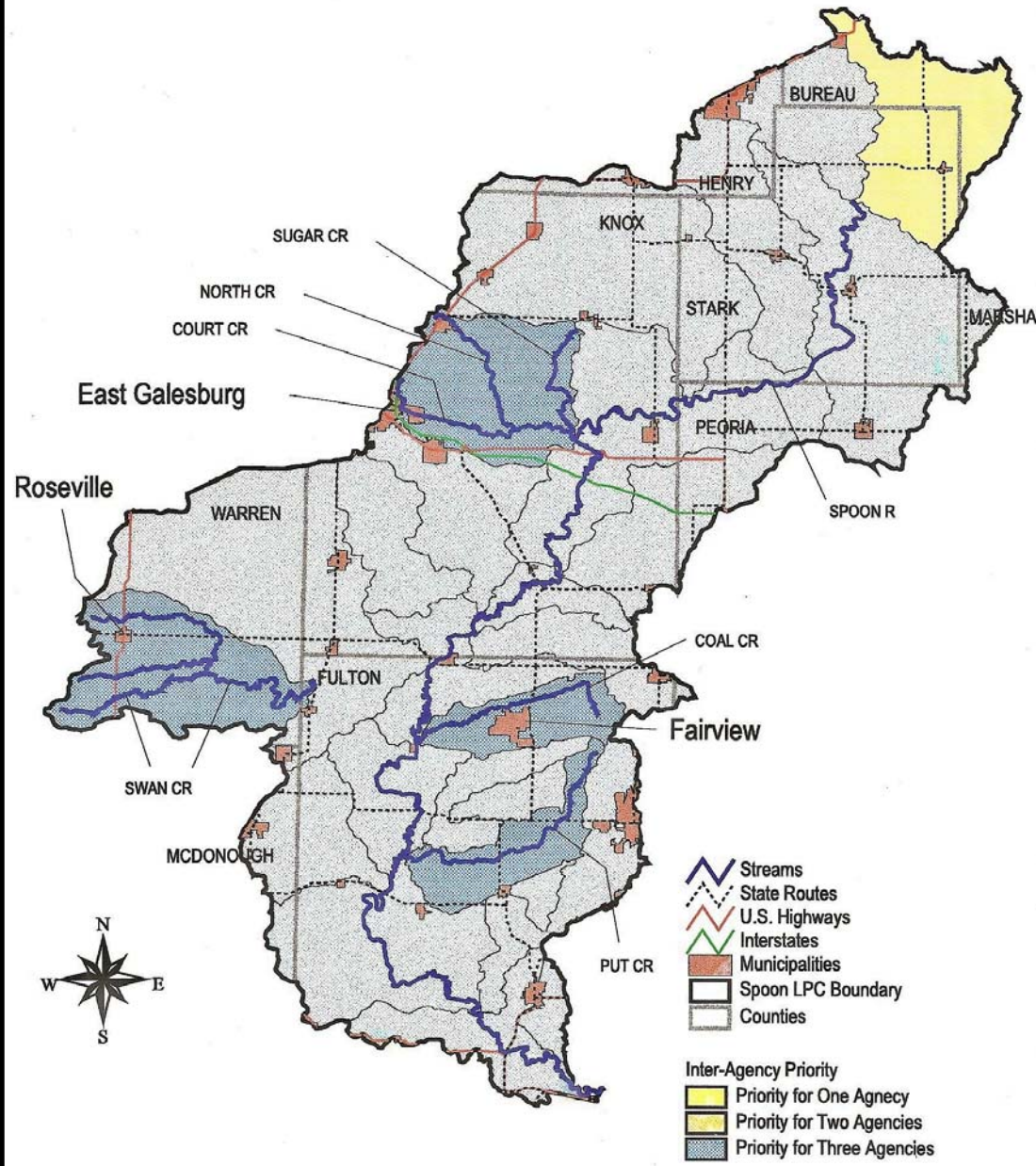


SPOON RIVER

1. Area- 1,200,000 acres
2. Length- 161 miles
3. 9 counties- Stark, Fulton, Knox, Warren largest
4. High contributor of sediment to Il. River
5. Agriculture- 82%
6. Forest & Woodland- 13%
7. Urban & built -up land- 2%
8. Wetlands- 1.4%



Spoon River Basin



0 10 20 Miles

My View



1. MY HOME ON WEST BLUFF

A. 150 years in the family

B. 7 MILES OF LEVEE



THE PEOPLE

1. INCOME 15% BELOW STATE AVERAGE
2. EDUCATION LEVEL- ALSO BELOW STATE AVE.-
VARIES WIDELY WITH COUNTIES
3. POVERTY LEVEL-15%
4. POPULATION DECLINED OVER ALMOST EVERY
DECADE
5. WORKFORCE-
 - A. FARMING- 3%
 - B. GOVERNMENT-16%
 - C. WHOLESALE & RETAIL- 50%
 - D. MANUFACTURING- BIGGEST \$ SHARE BY
INCOME

OUR WATERSHED ORGANIZATION

1. HISTORY- 10 YEARS OLD
 2. HOW IT STARTED- WATER PROBLEMS IN LEWISTOWN
 3. COMPOSITION OF MEMBERSHIP
 4. DAVE KING- PRAIRIE HILLS FORESTRY
 5. THE 41 ECO PARTNERSHIPS- IDNR- TAMMY WATSON- C2000
- A. JIM HEMINGWAY- ECOSYSTEMS ADMINISTRATOR





B. 17 GRANTS TOTALLING \$ 1,139,000

C. 137ACRES RESTORED, 1800 STUDENTS EDUCATED

D. HB 1780- PARTNERS FOR CONSERVATION- TILL 2021

	Project	Grantee	C2000	MATCH	TOTAL	
SRP006-99	Direct Seeding Workshop	Prairie Hills RC&D	\$7,559.00	\$6,539.00	\$14,098.00	
SRP004-00	Spoon River Protection Program	Warren Co SWCD	\$68,503.33	\$27,256.58	\$95,759.91	
SRP005-00A	Picayune & Negro Creeks Streambank Projects	Warren Co SWCD	\$17,871.21	\$6,575.31	\$24,446.52	
SRP003-01	Conservation-You-Know the Drill	Stark Co SWCD	\$13,500.00	\$1,500.00	\$15,000.00	
SRP005-01	Indian Creek Watershed Education Project	Stark Co SWCD	\$7,000.00	\$10,280.00	\$17,280.00	
SRP001-02	Peoria Co SWCD Tree Planter	Peoria Co SWCD	\$5,822.00	\$850.00	\$6,672.00	
SRP002-02	Conservation Field Day	Fulton Co SWCD	\$2,000.00	\$2,423.45	\$4,423.45	
SRP003-02	Spoon River Protection Program Phase 2	Warren Co SWCD	\$76,400.00	\$32,233.86	\$108,633.86	
SRP008-01	Dentention Basin/Wildlife Habitat Program	Fulton Co SWCD	\$68,473.97	\$141,760.15	\$210,234.12	
SRP004-03	Phase II Streambank Inventory Implementation	Warren Co SWCD	\$10,848.31	\$29,587.52	\$40,435.83	
SRP002-04	Farmington CUSD Habitat Creation	Farmington CUSD #265	\$66,755.00	\$41,411.00	\$108,166.00	
SRPPWG-00	Court Creek Pilot Watershed Restoration/Preservation	Knox Co SWCD	\$383,950.14	\$70,640.45	\$454,590.59	
SRPPG1-99	Planning Grant	Spoon River Partnership	\$9,800.00	\$19,202.00	\$29,002.00	
Support	4 Support Grants	Spoon River Partnership	\$10,758.89	\$284.90	\$11,043.79	
			TOTALS:	\$749,241.85	\$390,544.22	\$1,139,786.07
				65.74%	34.26%	



6. SOME HIGHLIGHTS
 - A. GILLES FARMS TOUR
 - B. EMIQUON- JASON BEVERLIN
 - C. COURT CREEK PILOT WATERSHED



NRCS SPECIAL PROJECT

A. THE NRCS STATE ENGINEERS- JIM EVANS & RUTH BOOK

B. 10 MILES OF STREAM BANK EROSION CONTROL

C. 67 CONTRACTS TO DATE- \$ 2.2 MILLION

**D. DEMONSTRATION TOUR- JULY 25, 07@ MAQUON-RENE
PARKER-COMMITTEE CHAIR**

THE FUTURE



1. THE WORLD IS FLAT- FRIEDMAN
2. HOW WILL AFFECT THE SPOON RIVER AREA
 - A. OUR POPULATION WILL CONTINUE TO DECLINE
 - B. PEORIA- WILL IT REMAIN THE PLACE FOR OUR CHILDREN TO GO FOR A JOB?
 - C. THE EVOLUTION IN FARMING
 - D. WHO WILL OWN THE LAND
 - E. TOURISM- IS IT A REALISTIC HOPE FOR THE AREA?

F. EDUCATION

