

Large Lakes; Big Floods; the Deglacial History of the Illinois River Valley

Brandon Curry

Illinois State Geological Survey, Prairie Research Institute, University of Illinois at
Urbana-Champaign, Champaign, IL 61820, b-curry@illinois.edu

Edwin Hajic

Landscape History Program, Illinois State Museum, 1011 E. Ash St, Springfield, IL 62703

Illinois Quaternary Deposits 1979

Hudson & Wisconsin Stage

- Cahokia Fm, Grayslake Peat
- Parkland Sand, Peyton
- Colluvium, Lake Michigan Fm

Wisconsin Stage

- Equality Fm
- Henry Fm
- Peoria Loess & Roxana Silt
- Wedron Fm
- Wedron Fm End Moraines
- Trafalgar Fm
- Winnebago Fm

Illinoian Stage

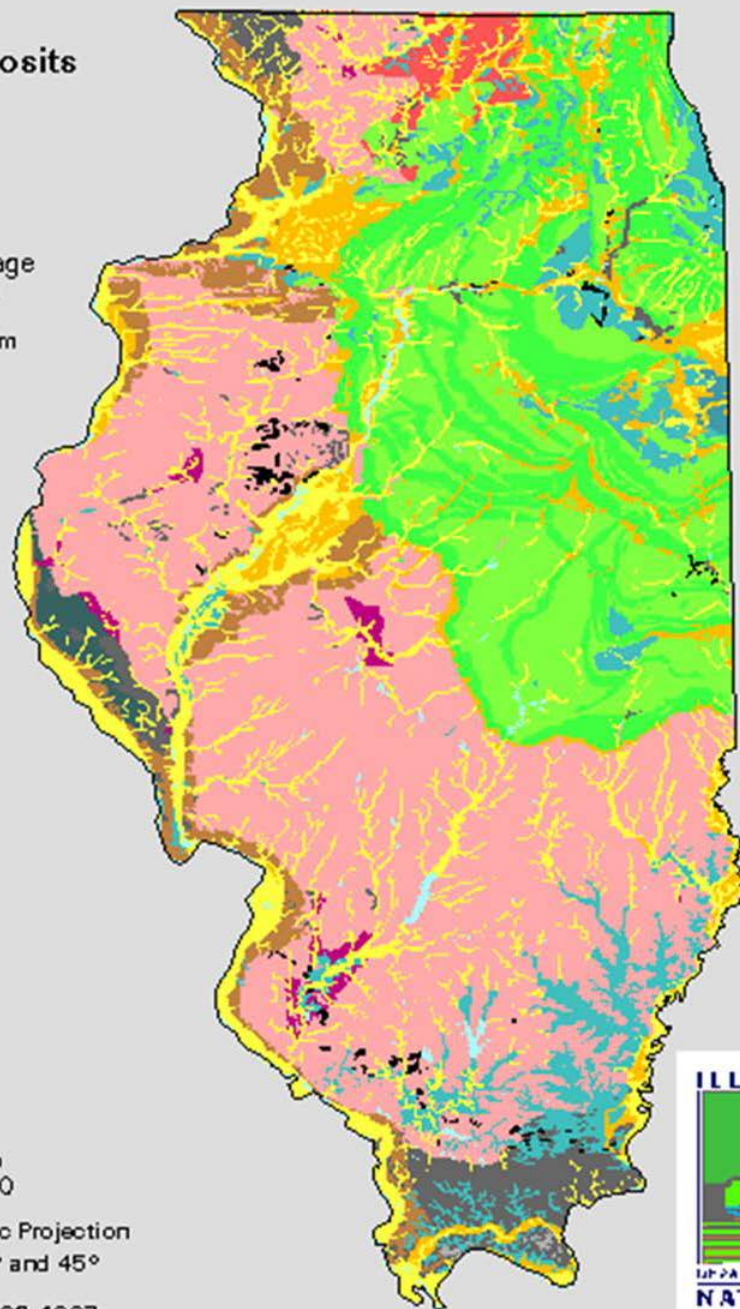
- Glasford Fm
- Teneriffe Silt & Pearl Fm

Kansan Stage

- Banner Fm

Other

- Mounds Gravel
- Bedrock at or near surface
- Surface Mines
- Water



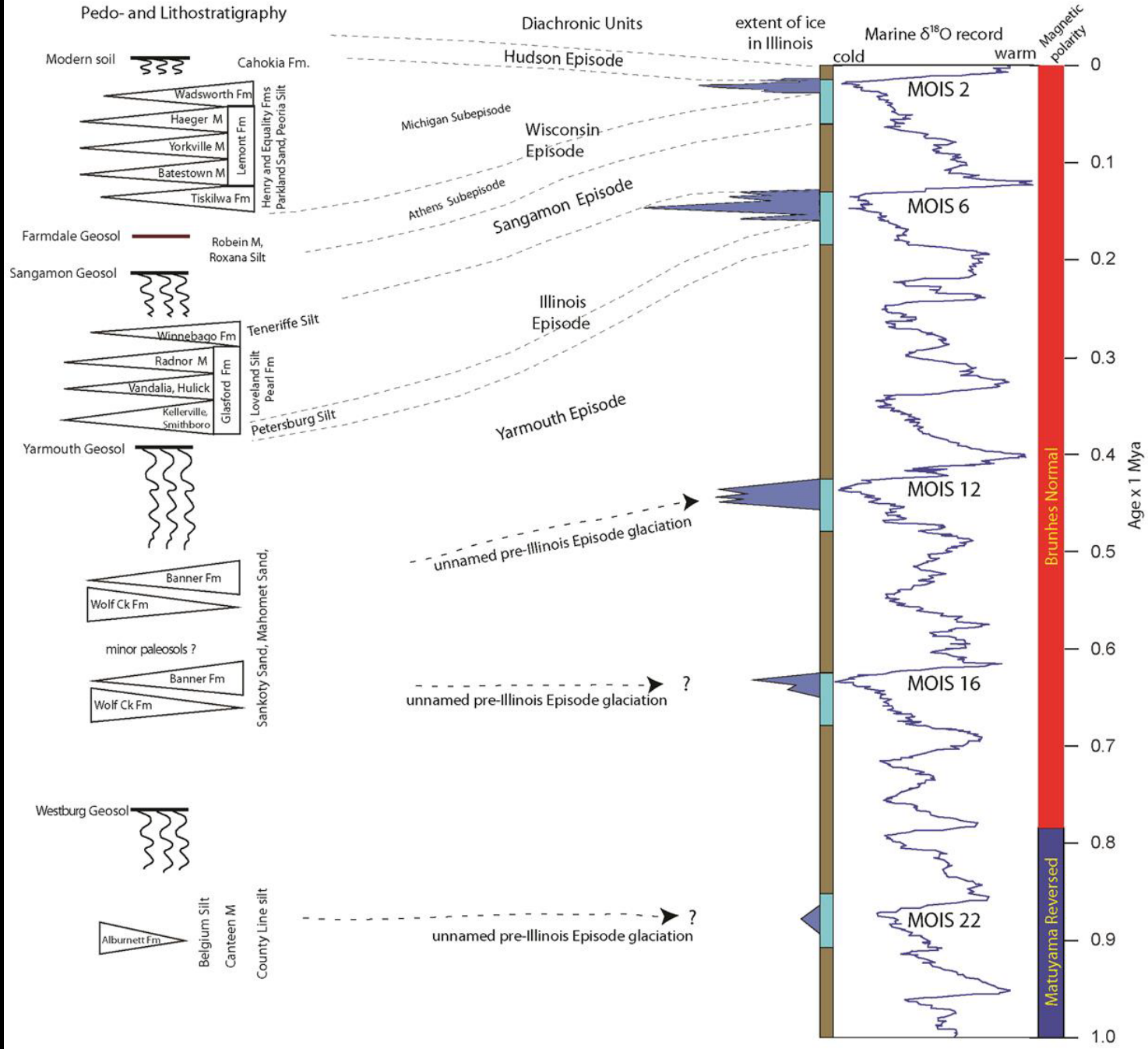
0 Miles 50

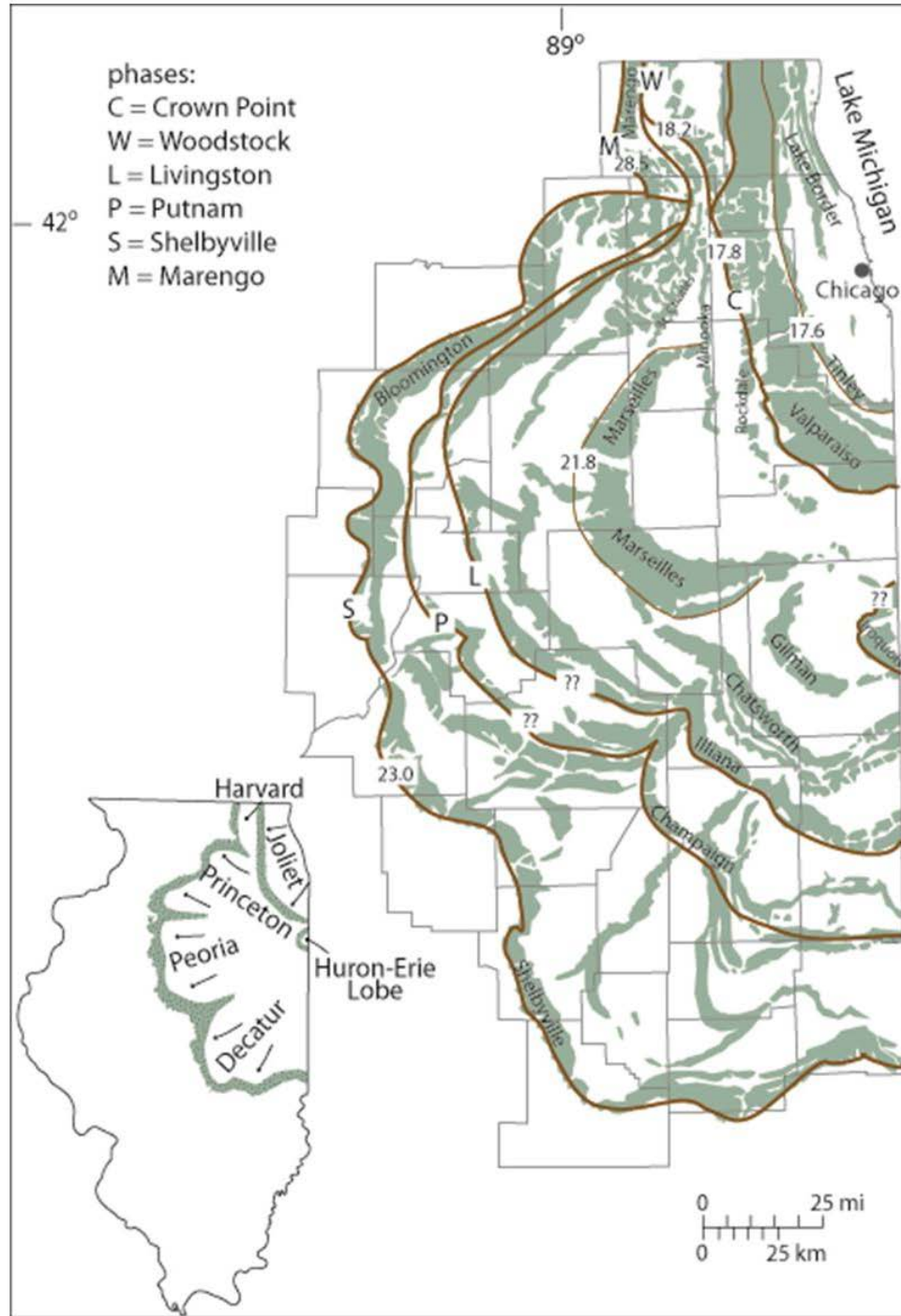
Lambert Conformal Conic Projection
standard parallels 33° and 45°

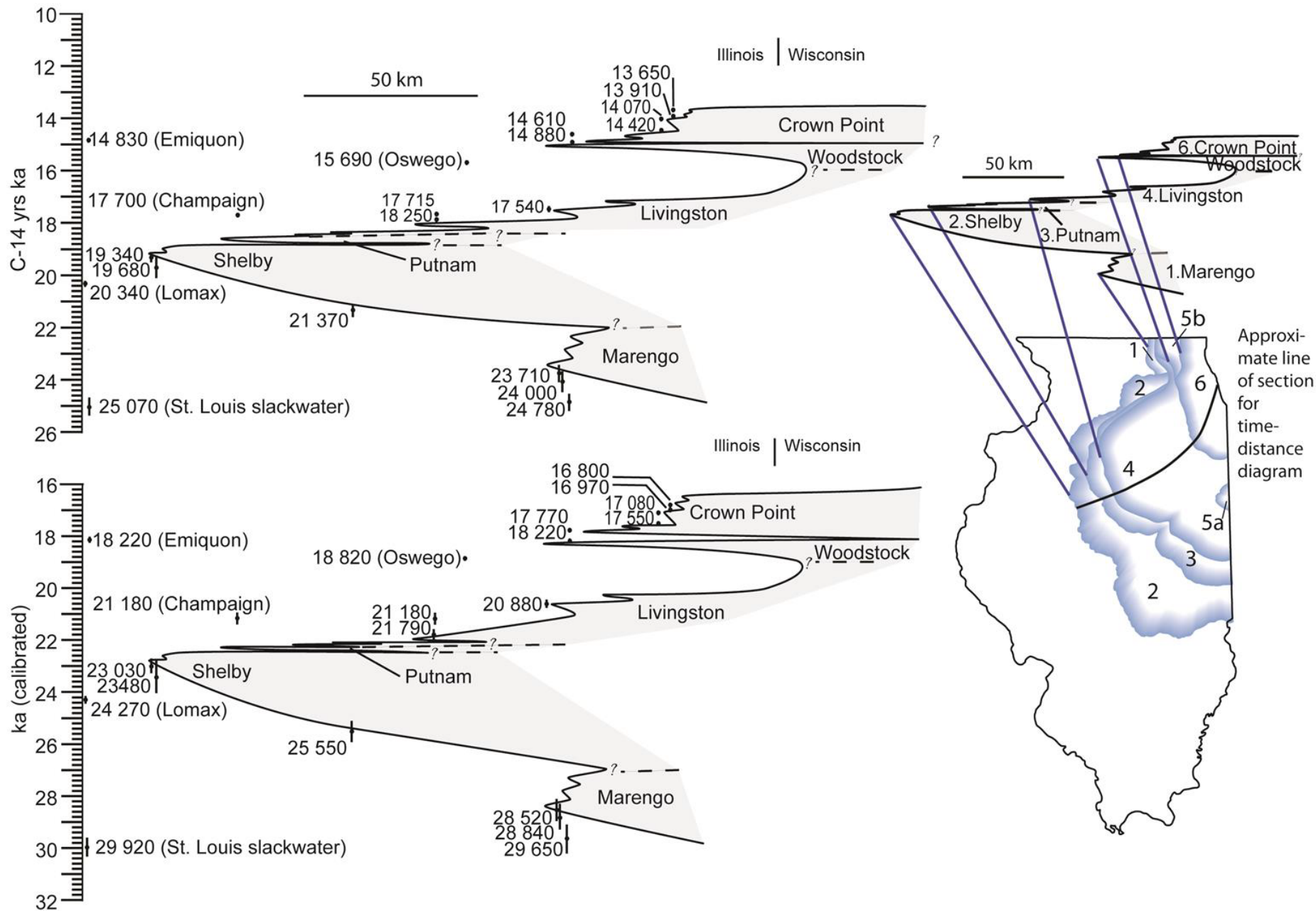
GIF produced August 20, 1997

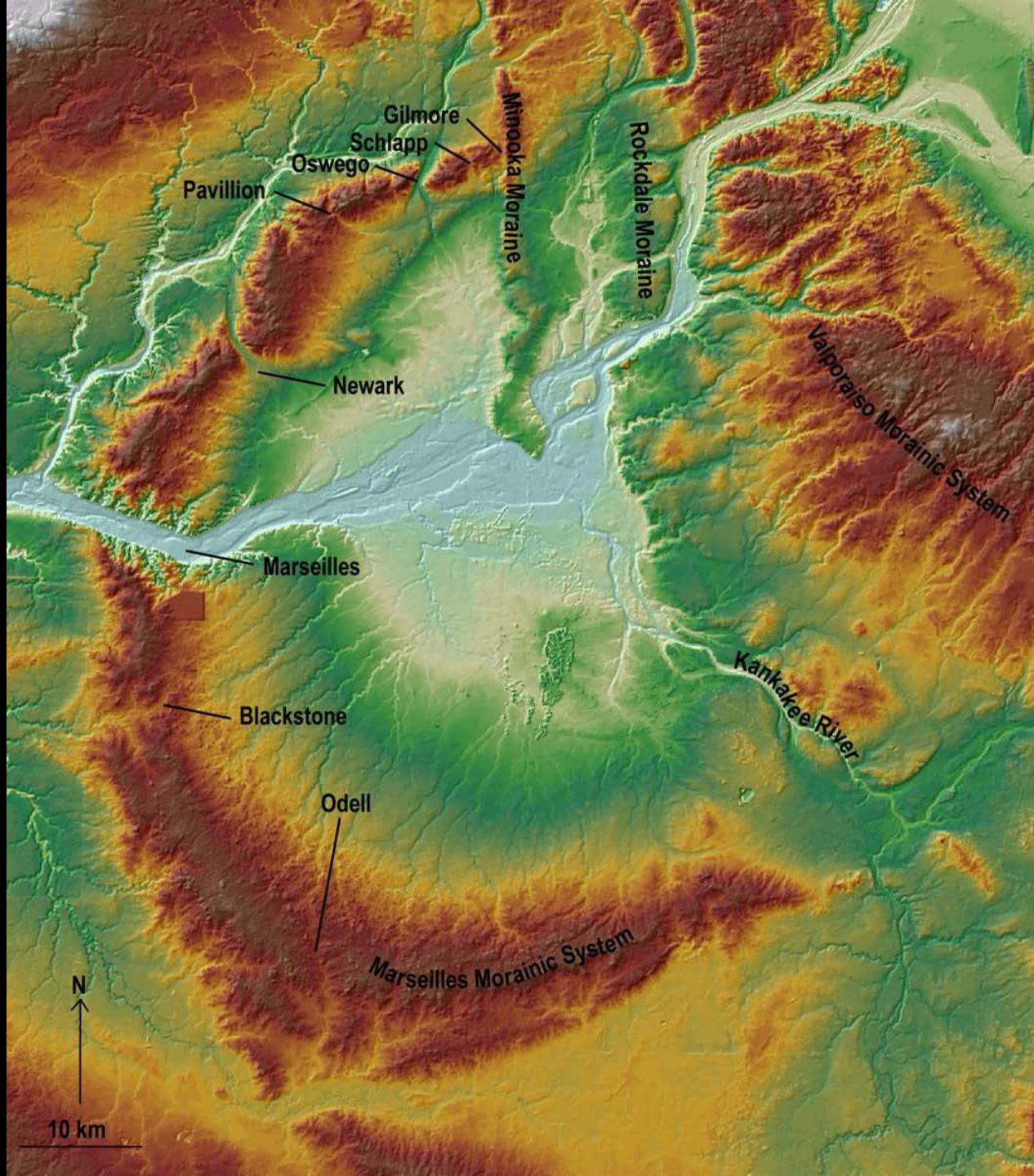


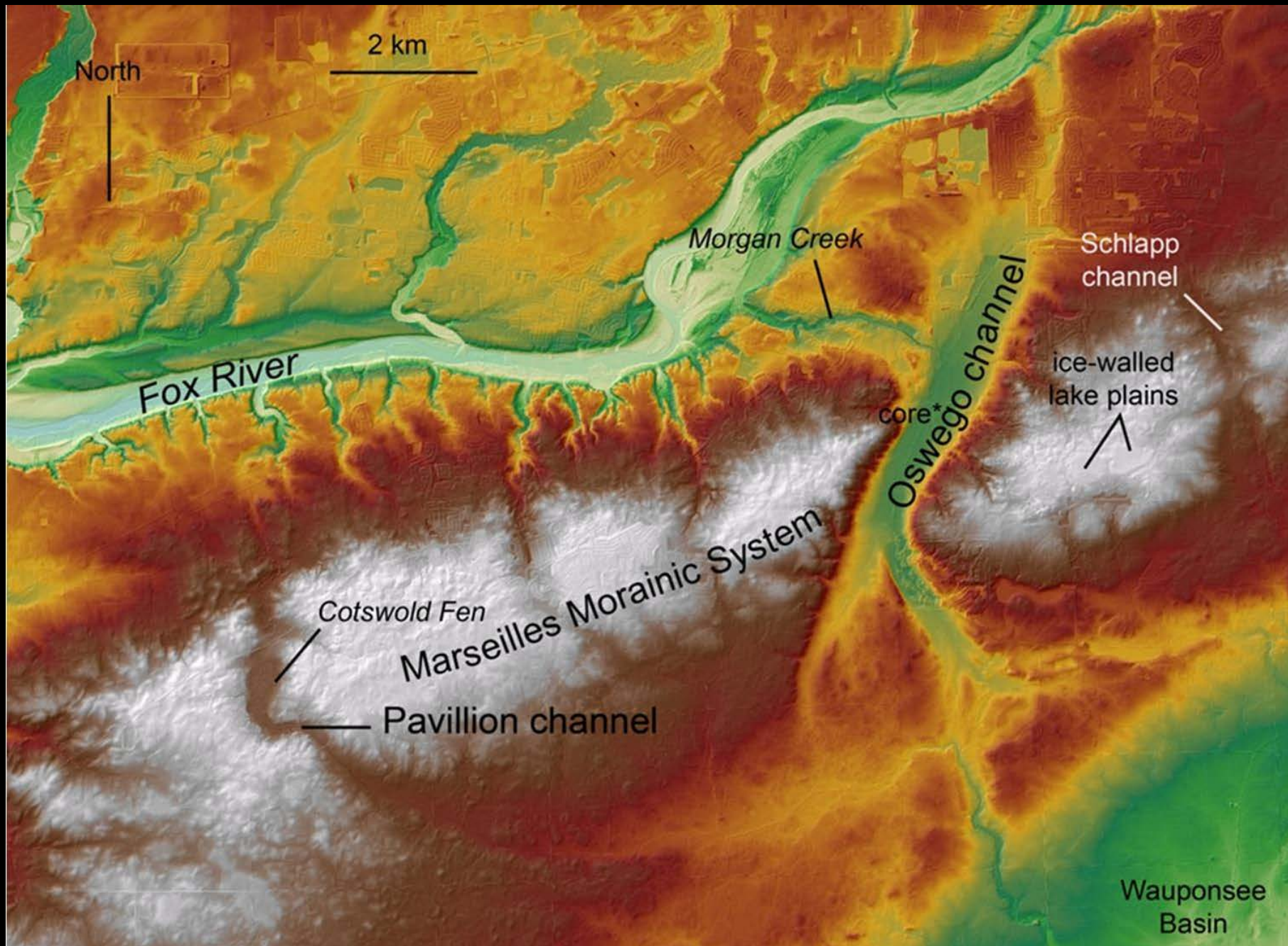
Pedo- and Lithostratigraphy

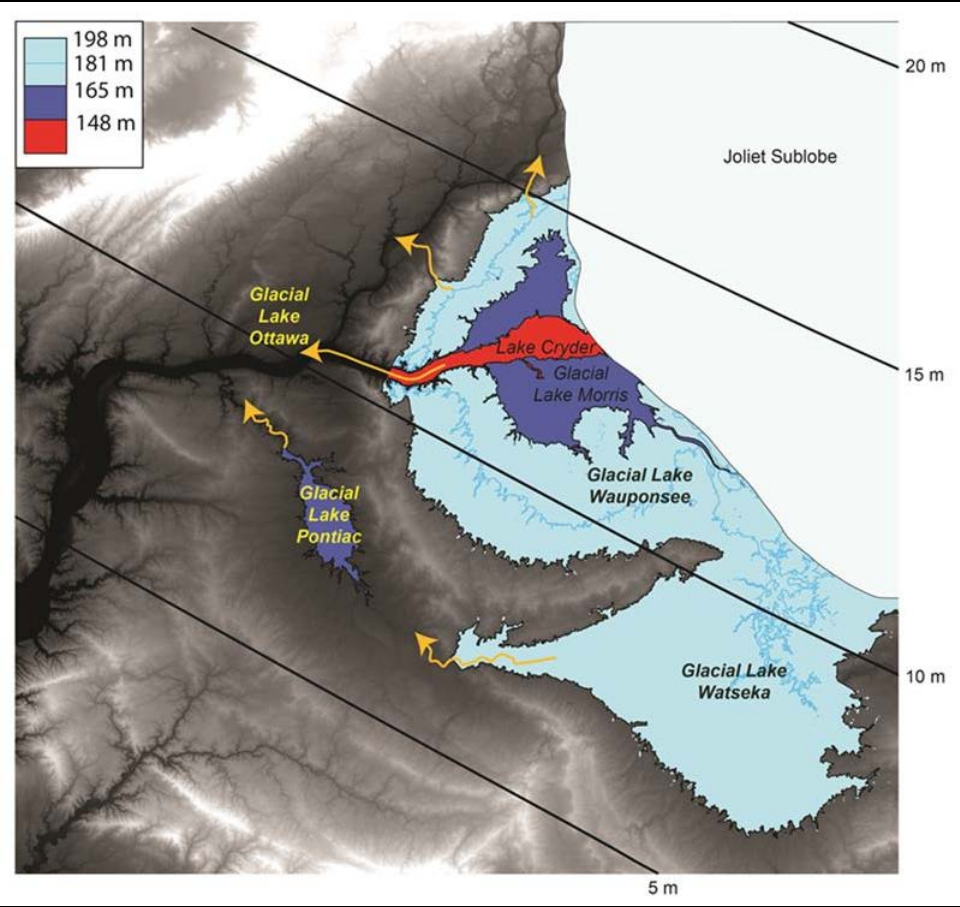


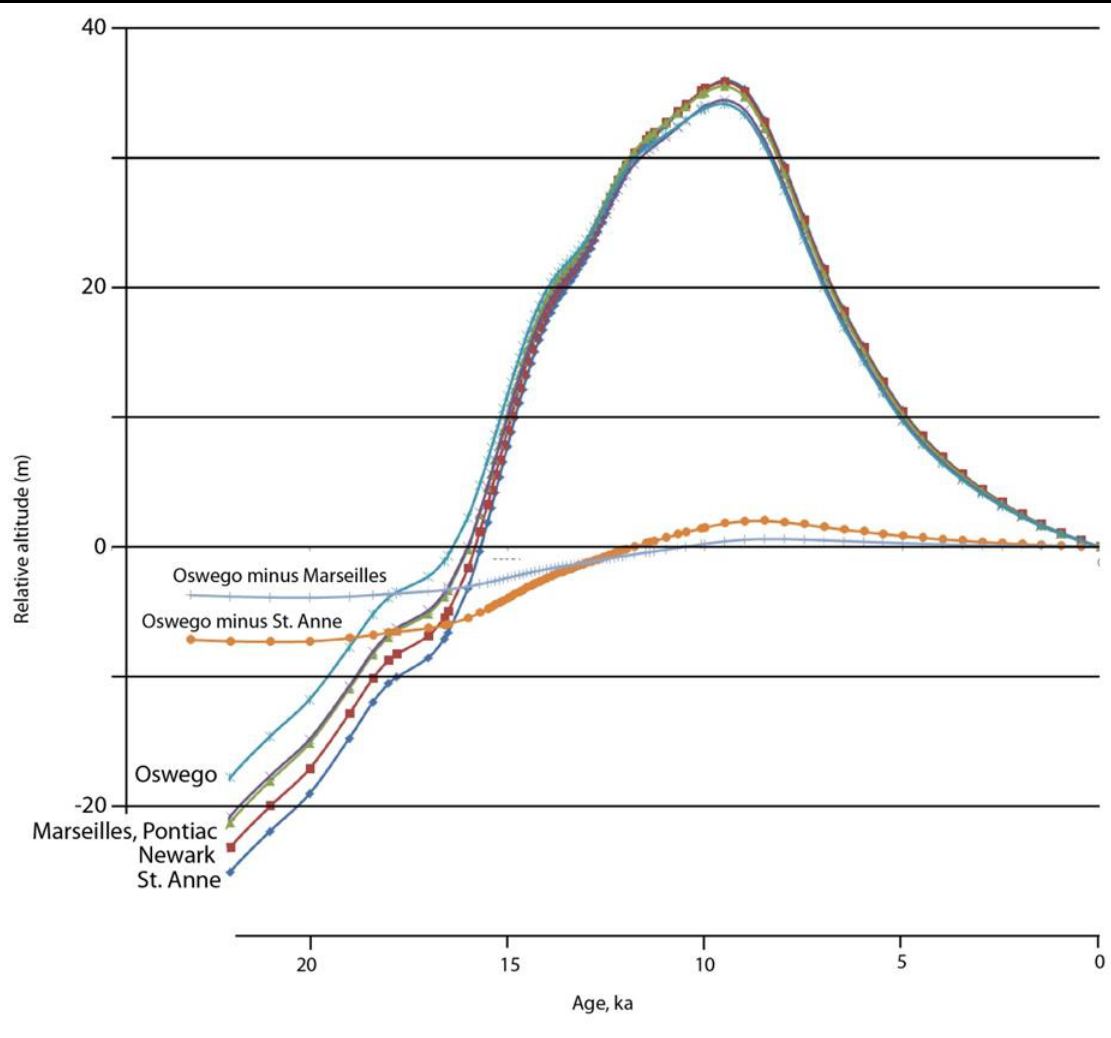










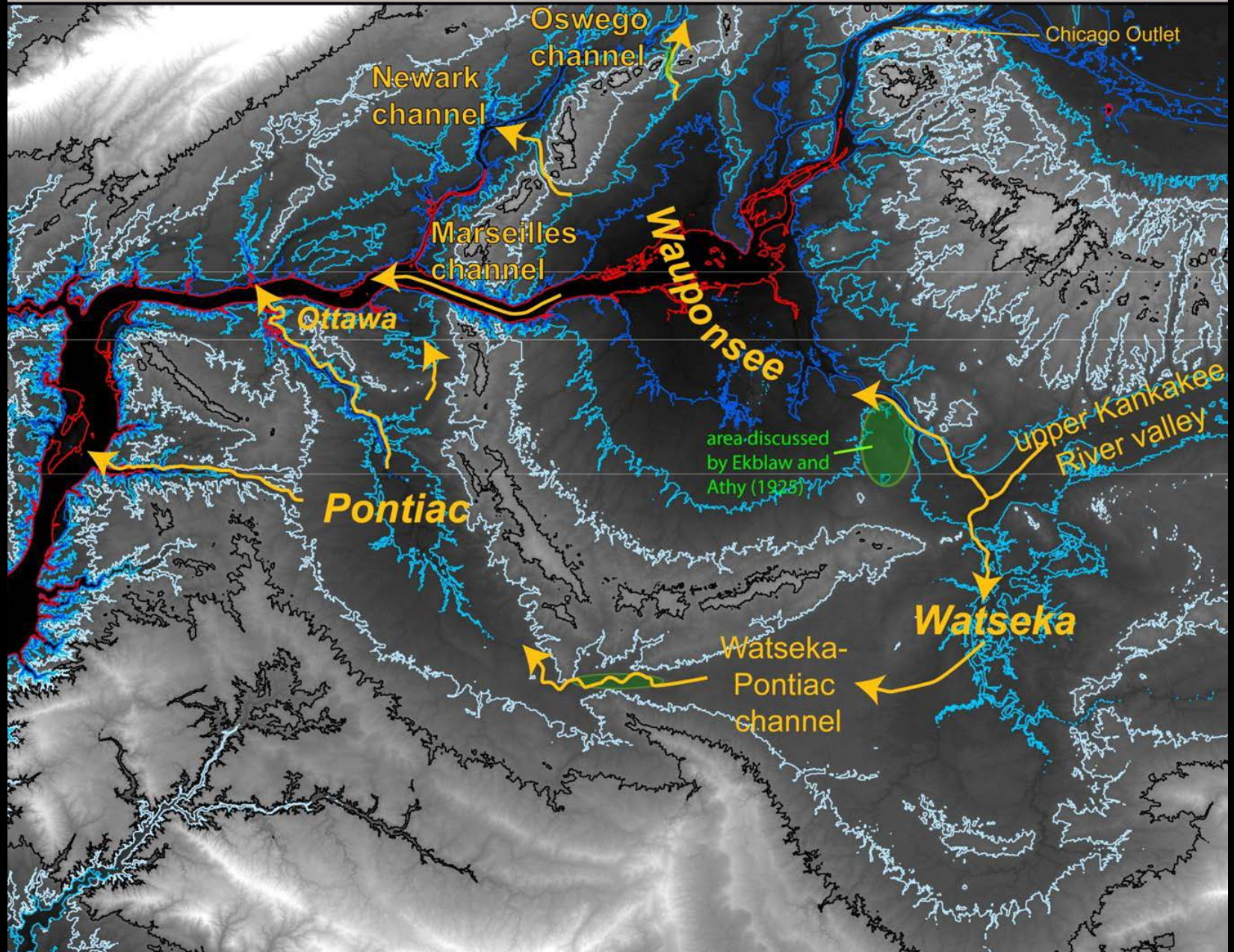


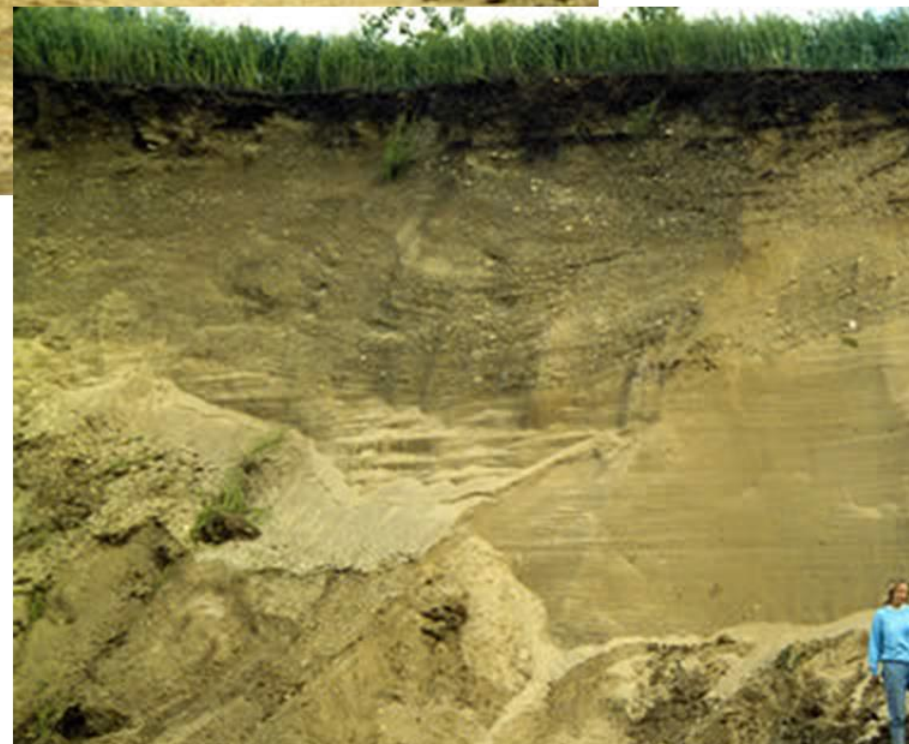
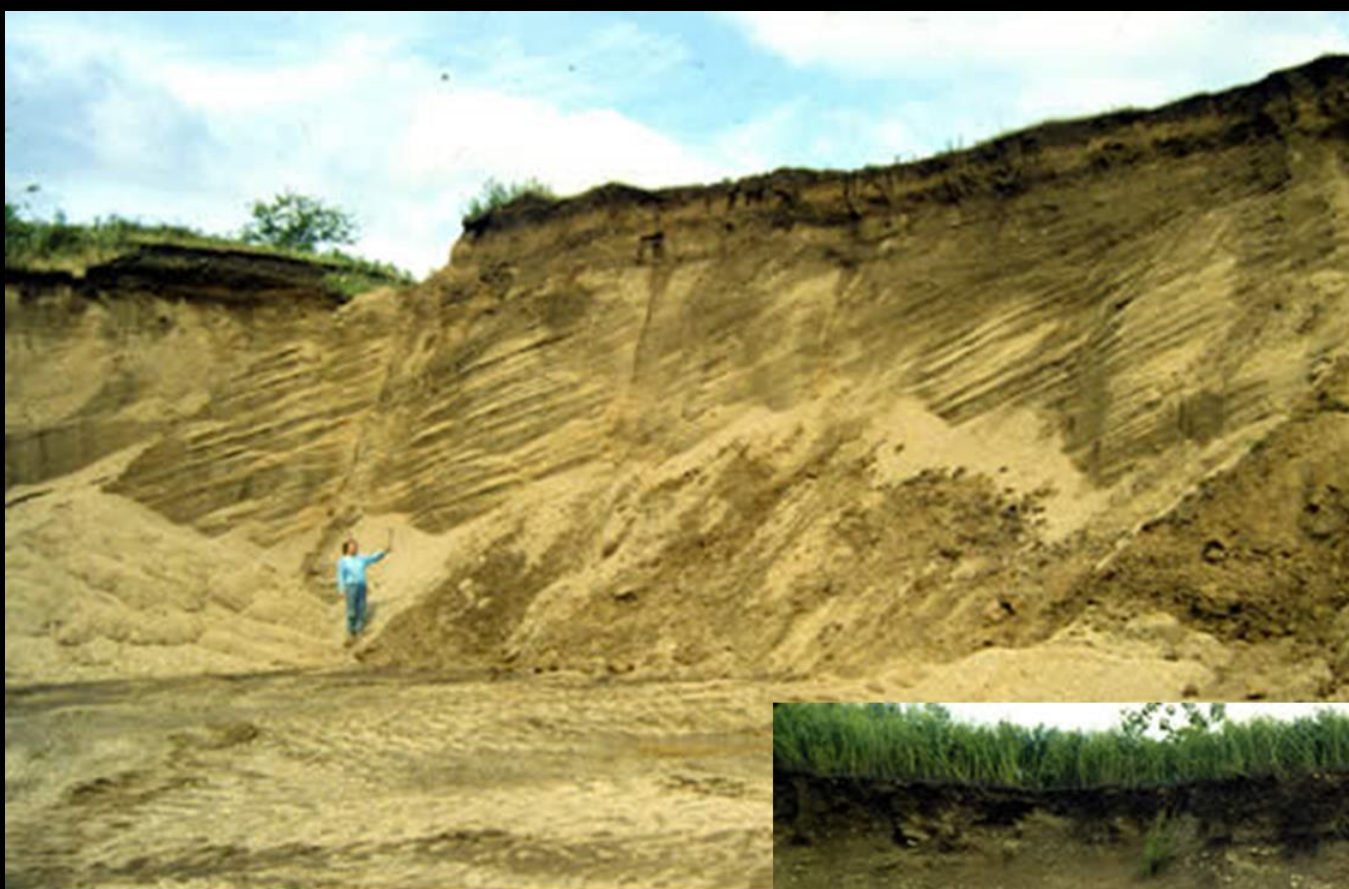


- 213 m; reference
- 198 m; maximum altitude of proglacial lakes prior to overflow
- 181 m; topographic sill of Oswego channel
- 165 m; bedrock elevation in Oswego channel
- 148 m; base of escarpment attributed to Lake Cryder

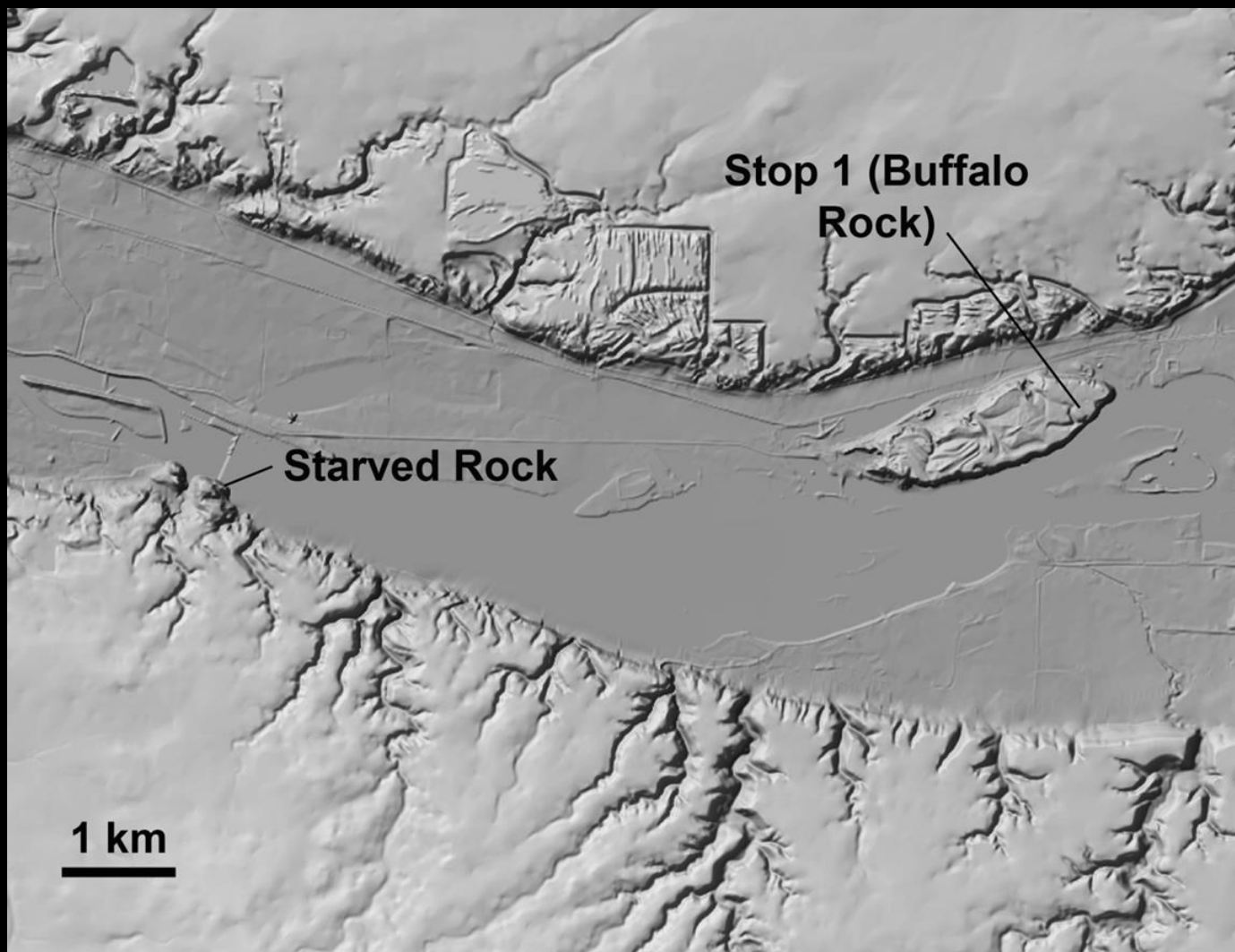
 areas where torrent scoured bedrock surface

 overflow routes across moraines and between glacial lake basins





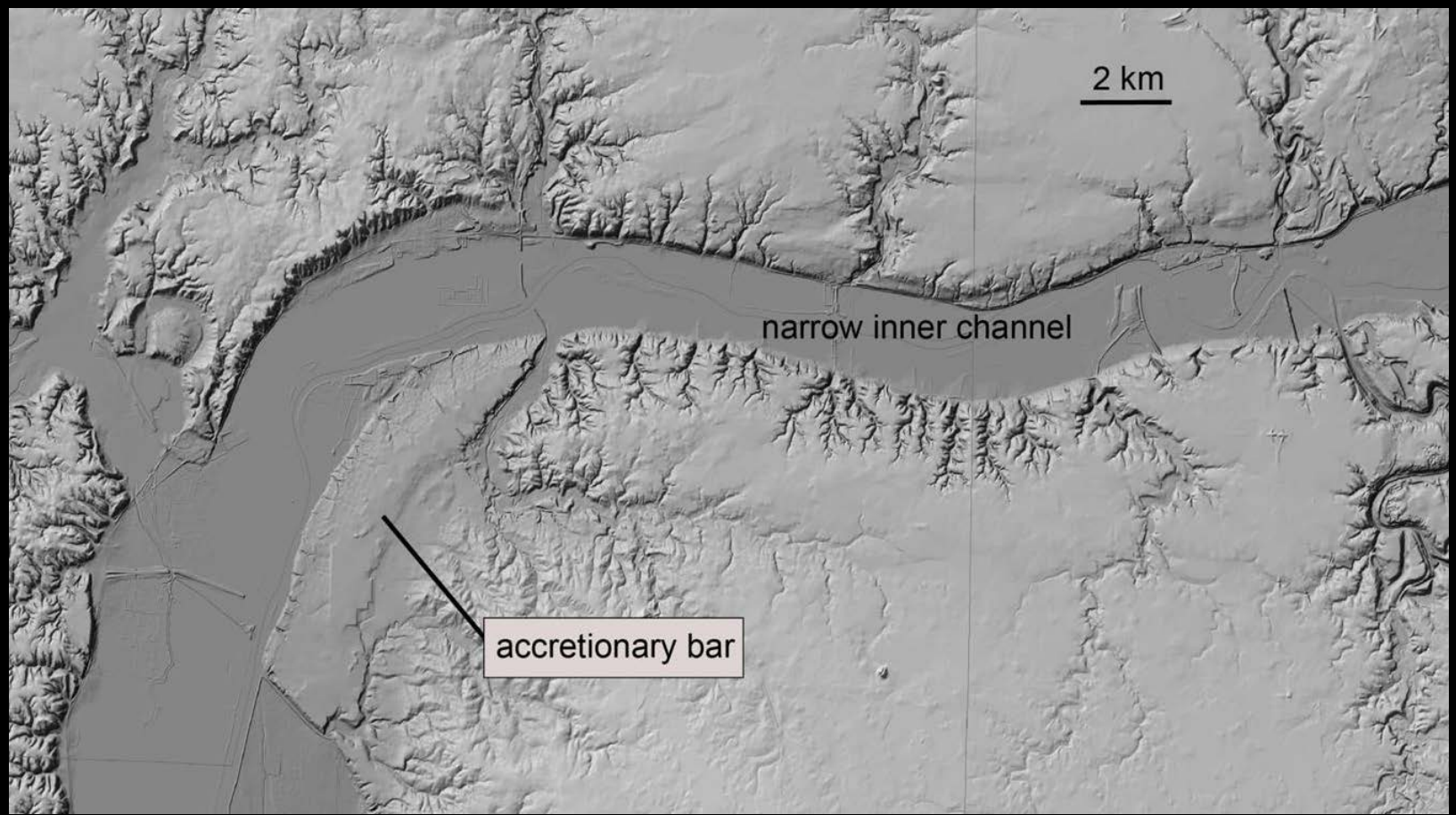
Movie? (thanks
Jennifer!)

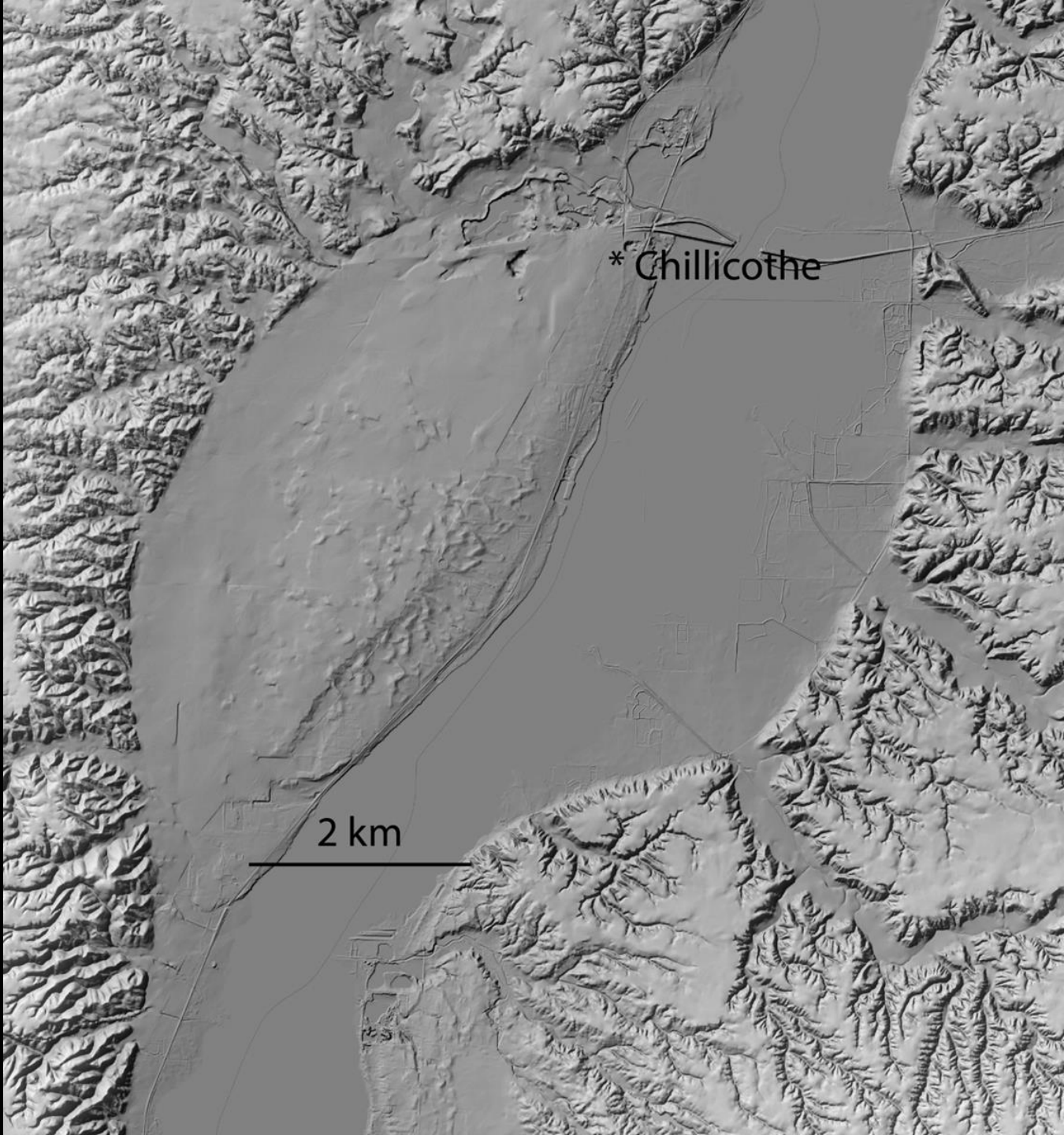


2 km

narrow inner channel

accretionary bar





* Chillicothe

2 km

Marseilles Morainic System



ice-walled lake plains

Newark channel

Minooka
Moraine

Kendall Co.
Grundy Co.

Lisbon Delta

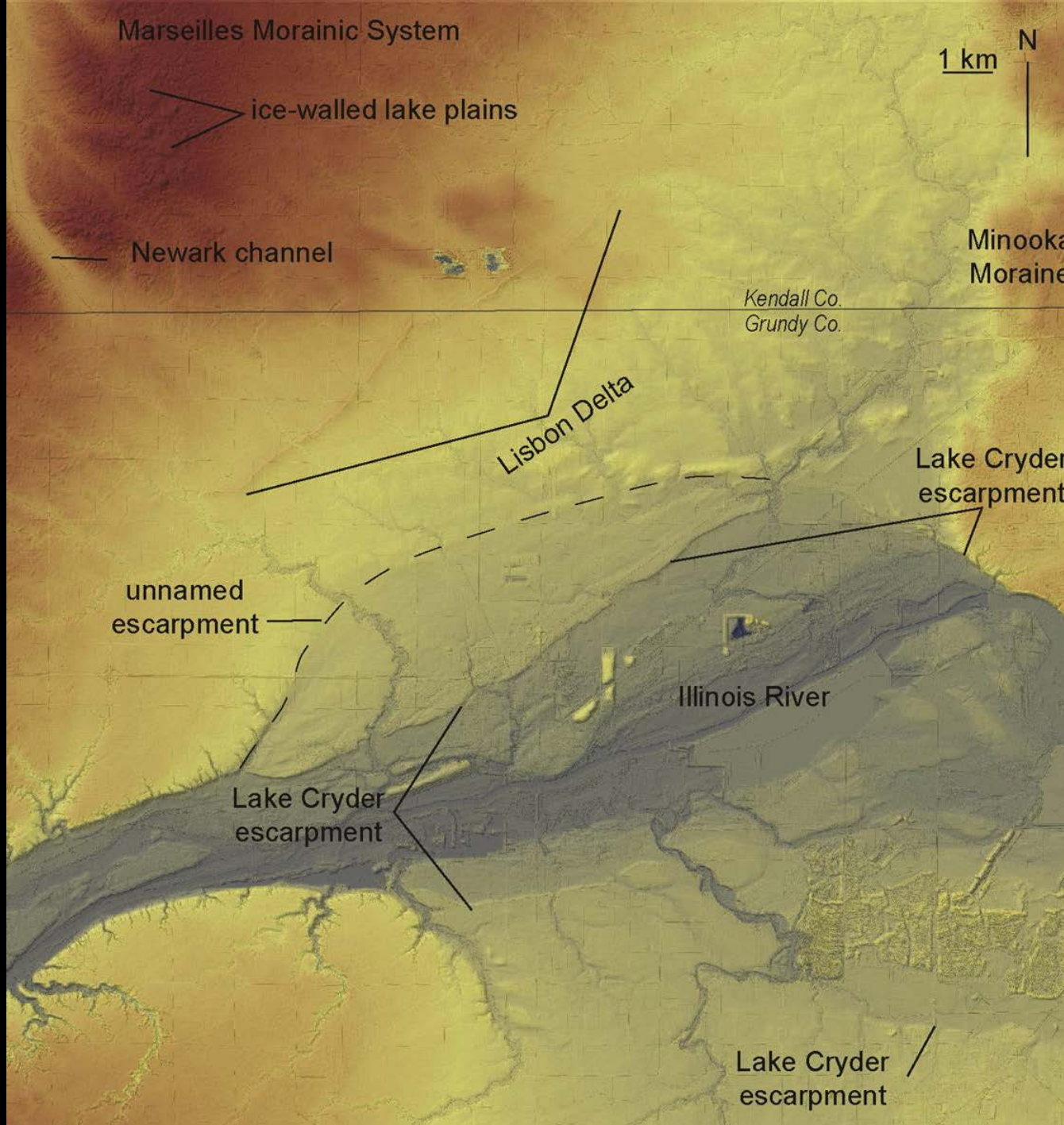
Lake Cryder
escarpment

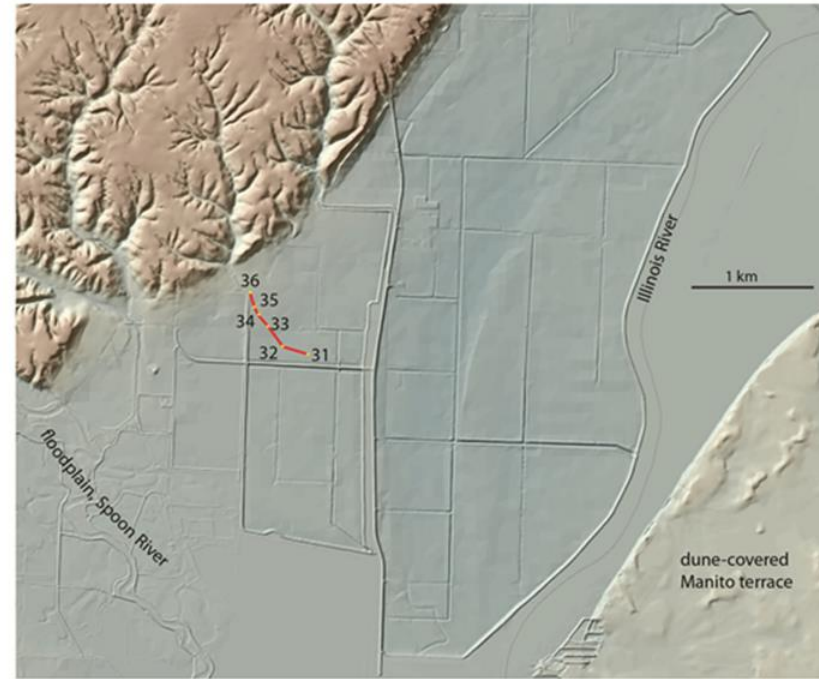
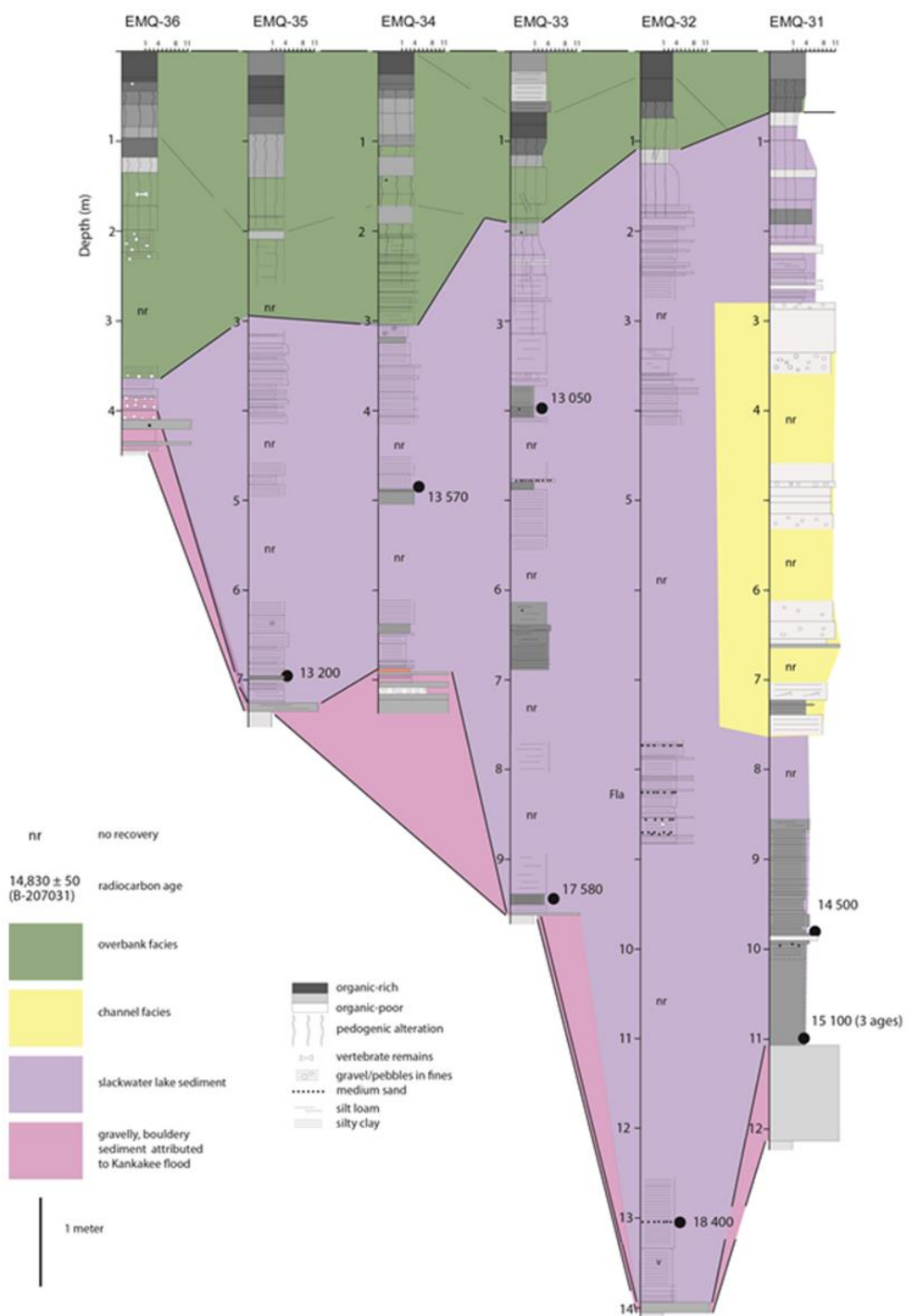
unnamed
escarpment

Illinois River

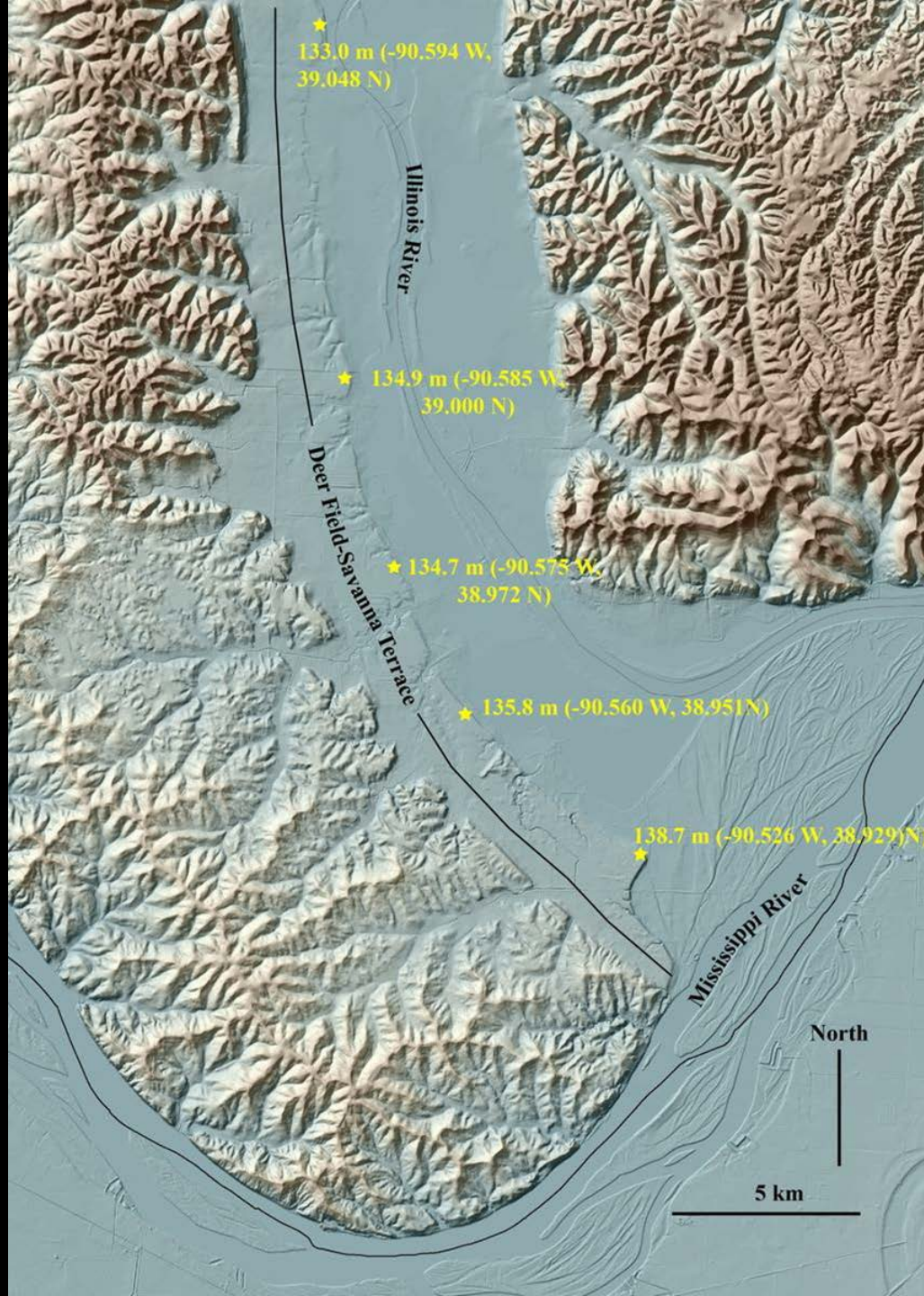
Lake Cryder
escarpment

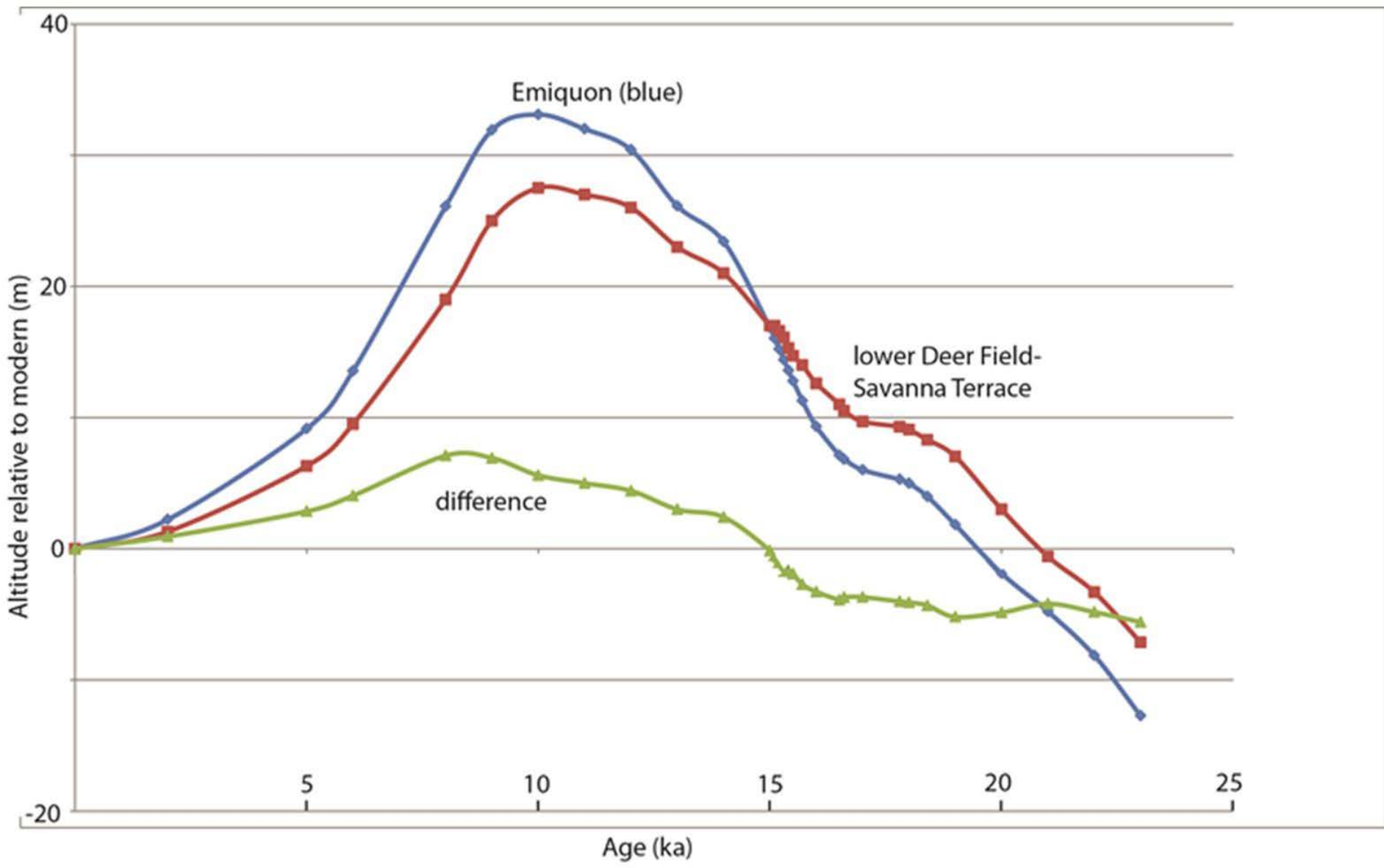
Lake Cryder
escarpment

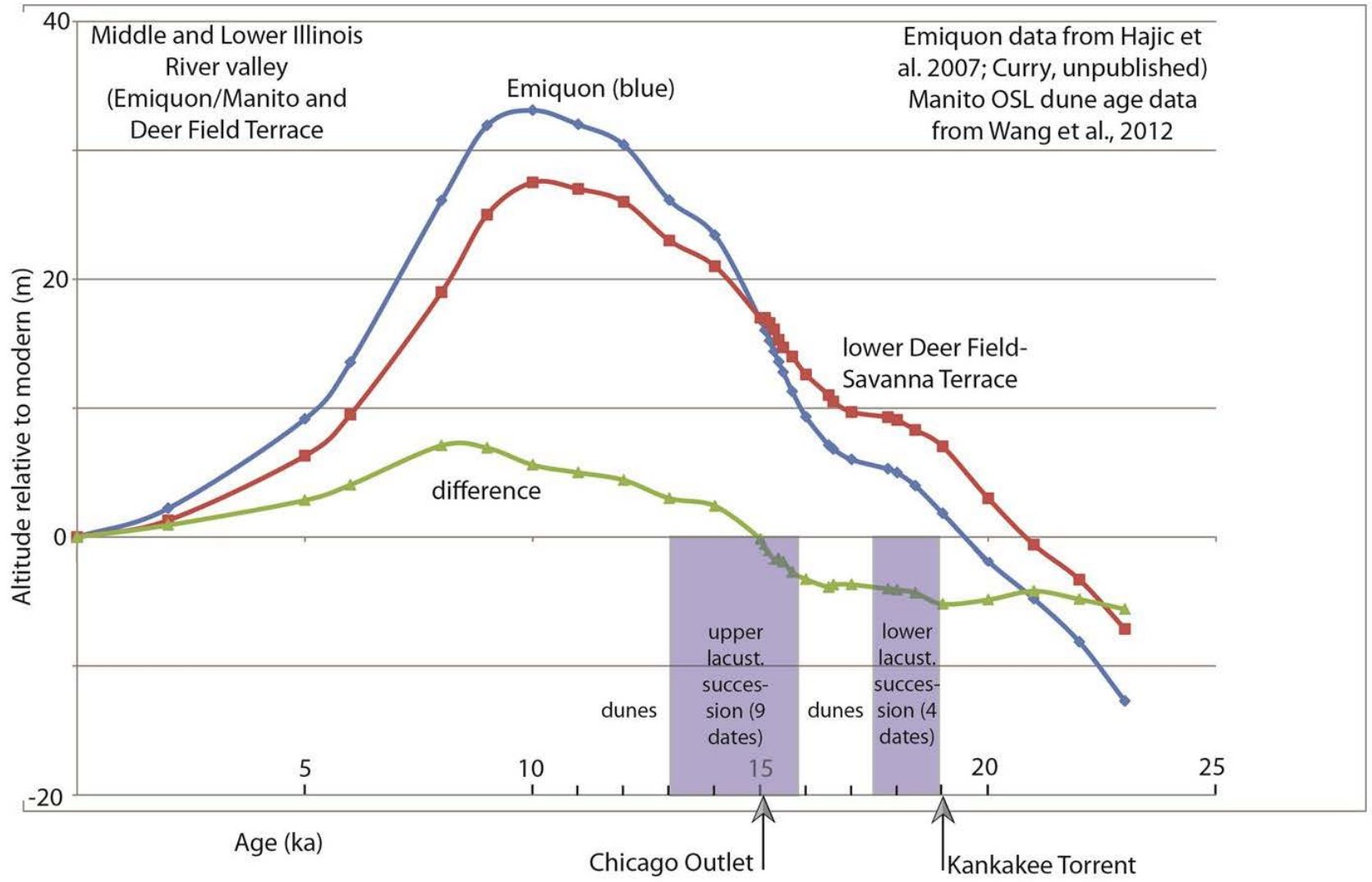




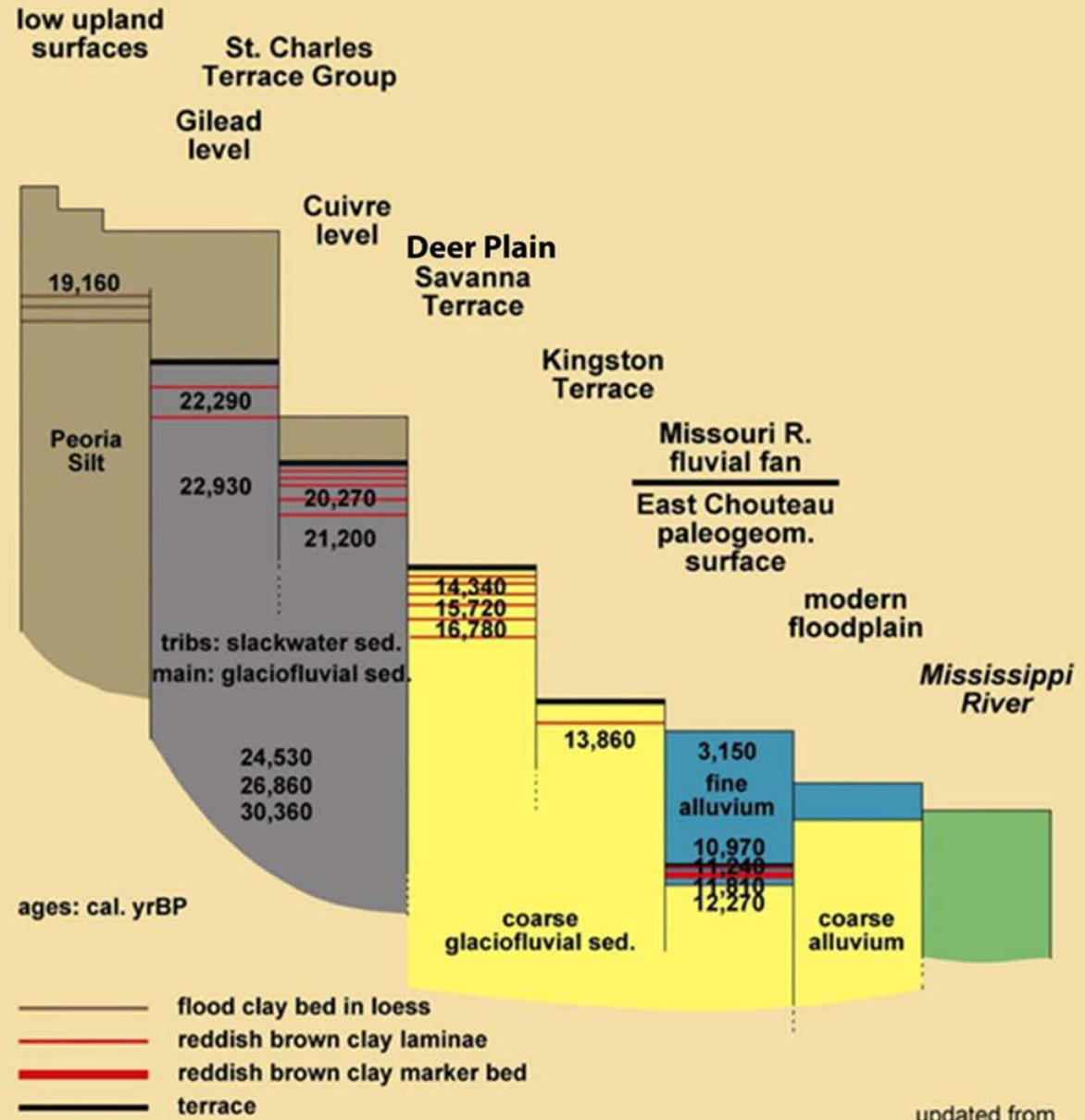




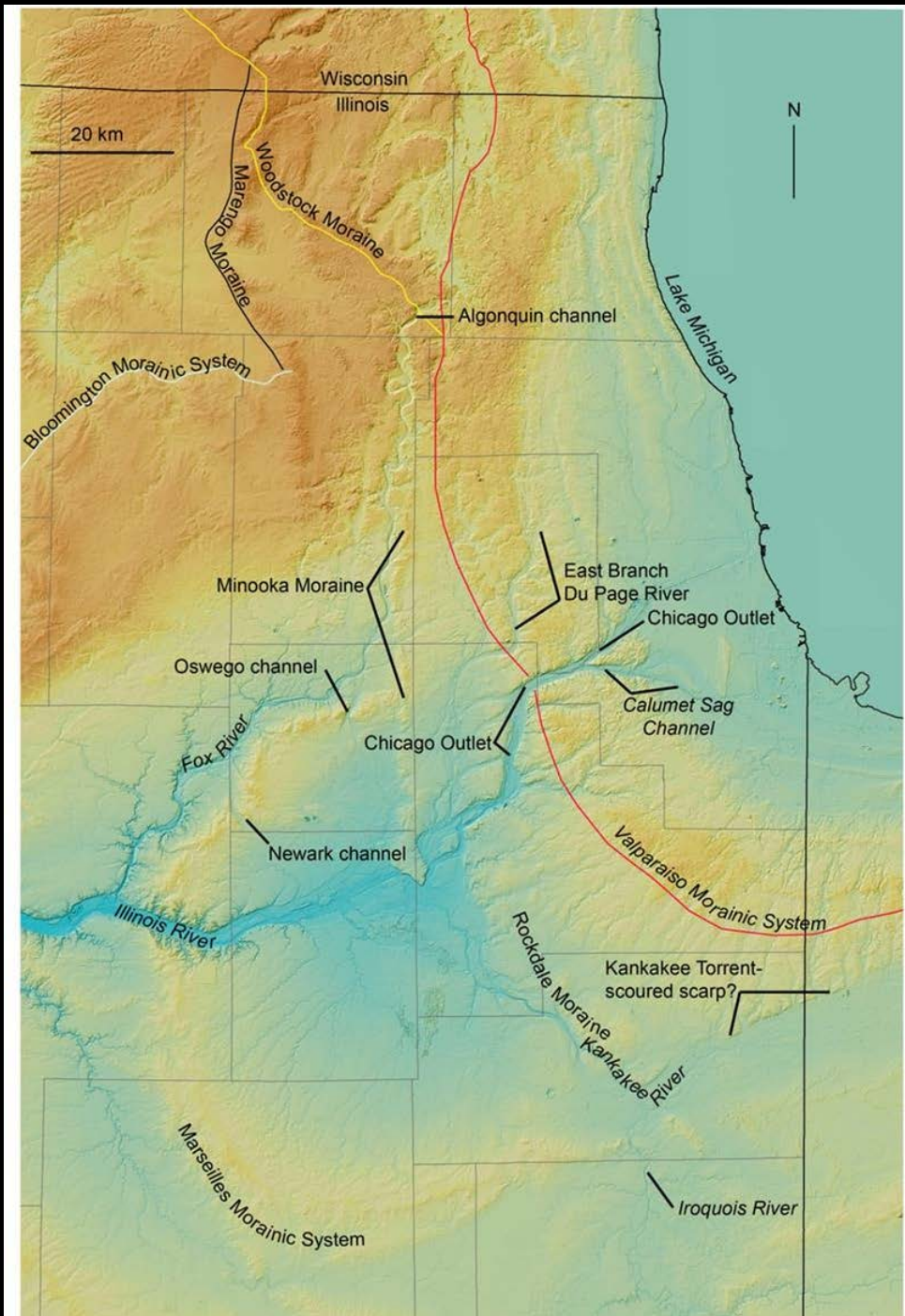


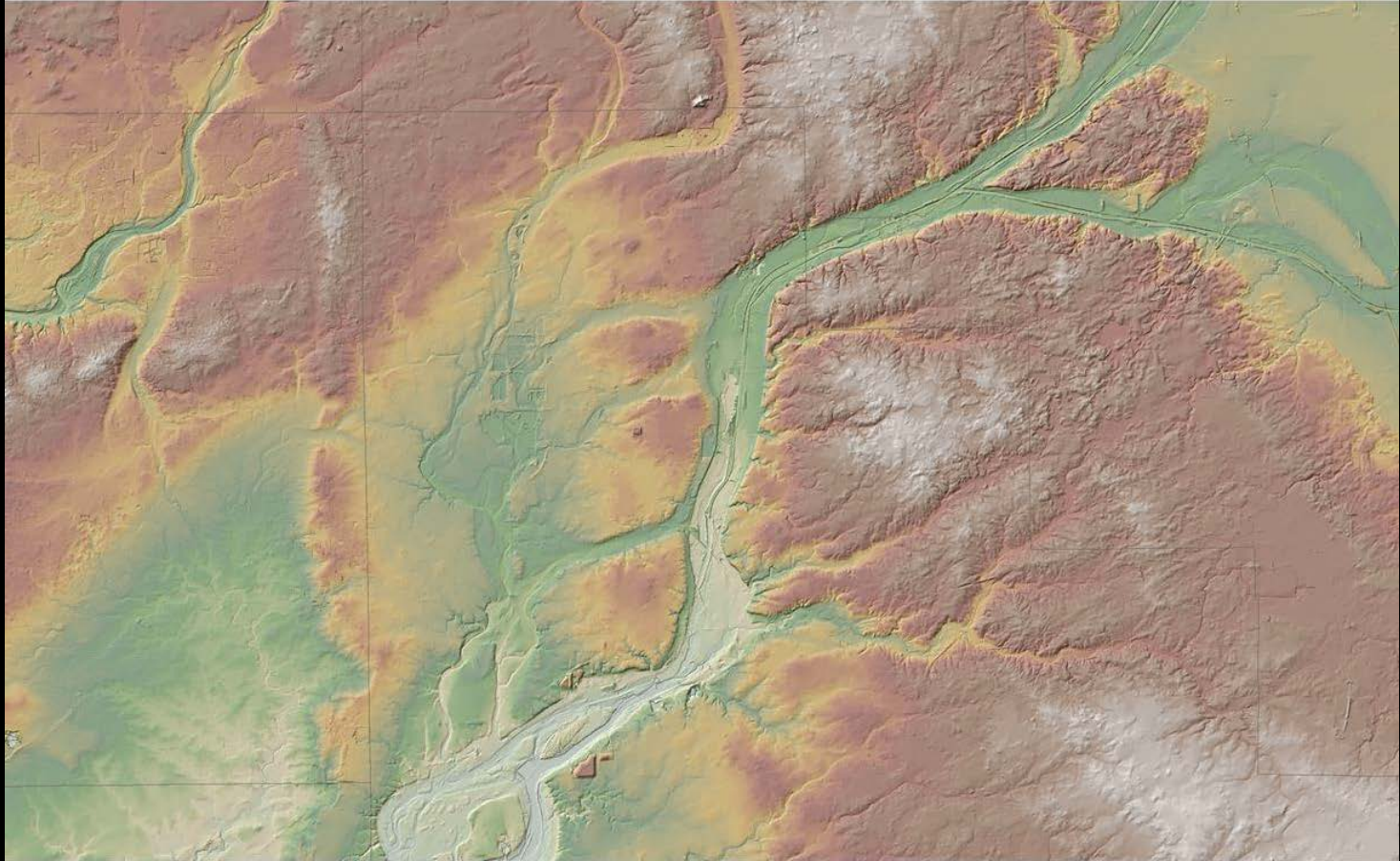


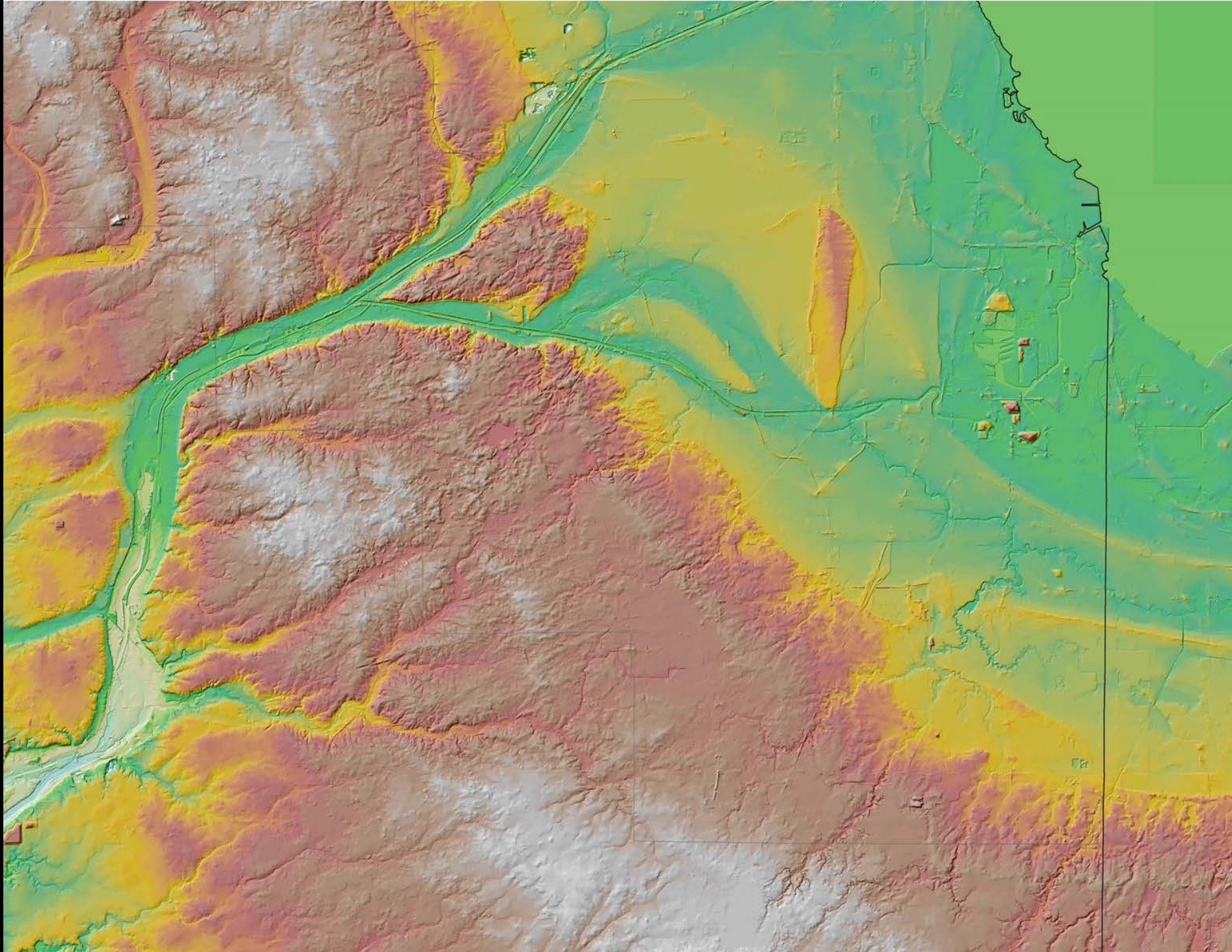
Generalized Stratigraphy and Ages, Three Rivers Area, Upper to Middle Mississippi River Valley Transition



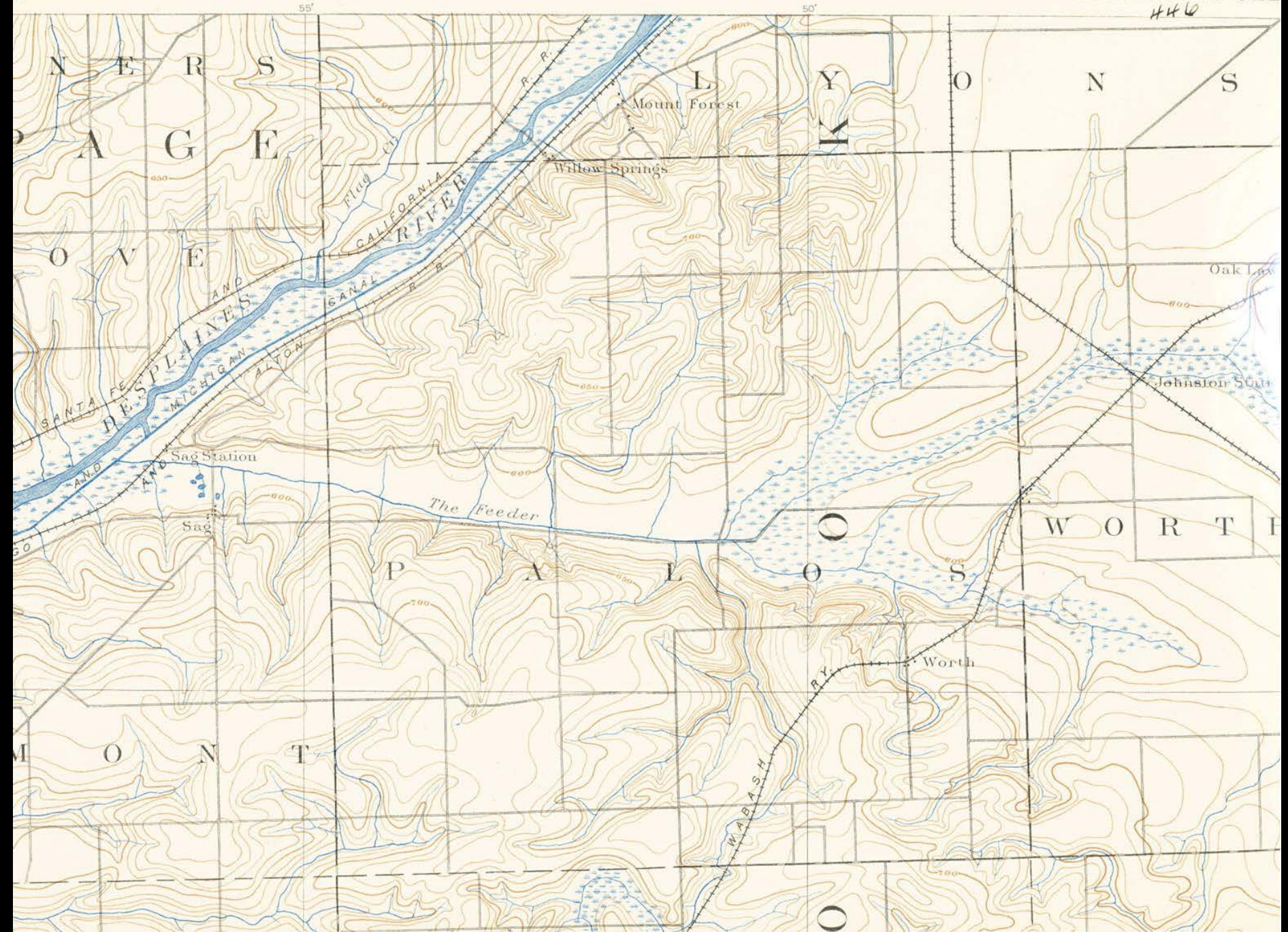
updated from Hajic et al. (1991)



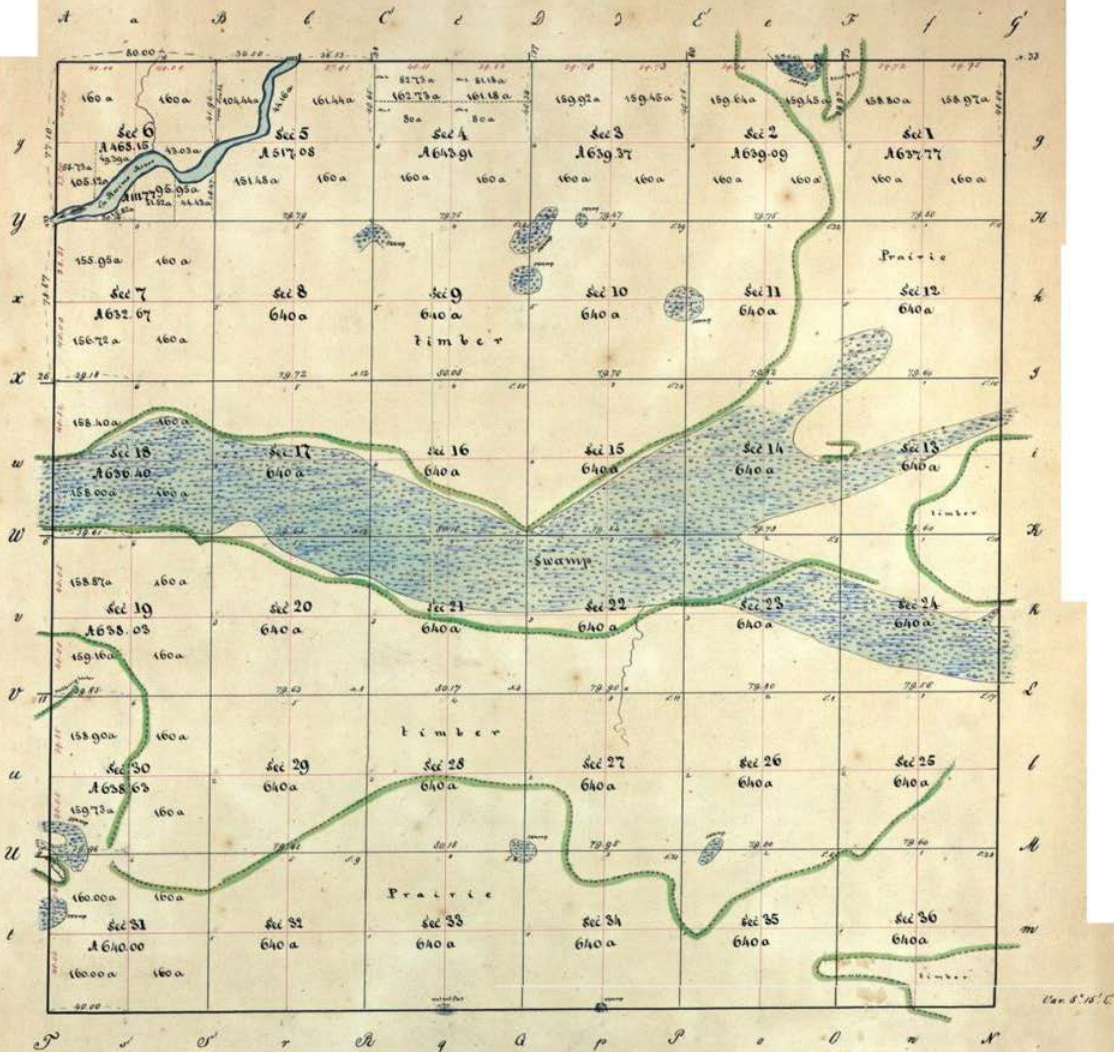




VEY.
t.



Township N^o 37 North of the Base line, Range N^o 12 East of the 3^d principal Meridian.



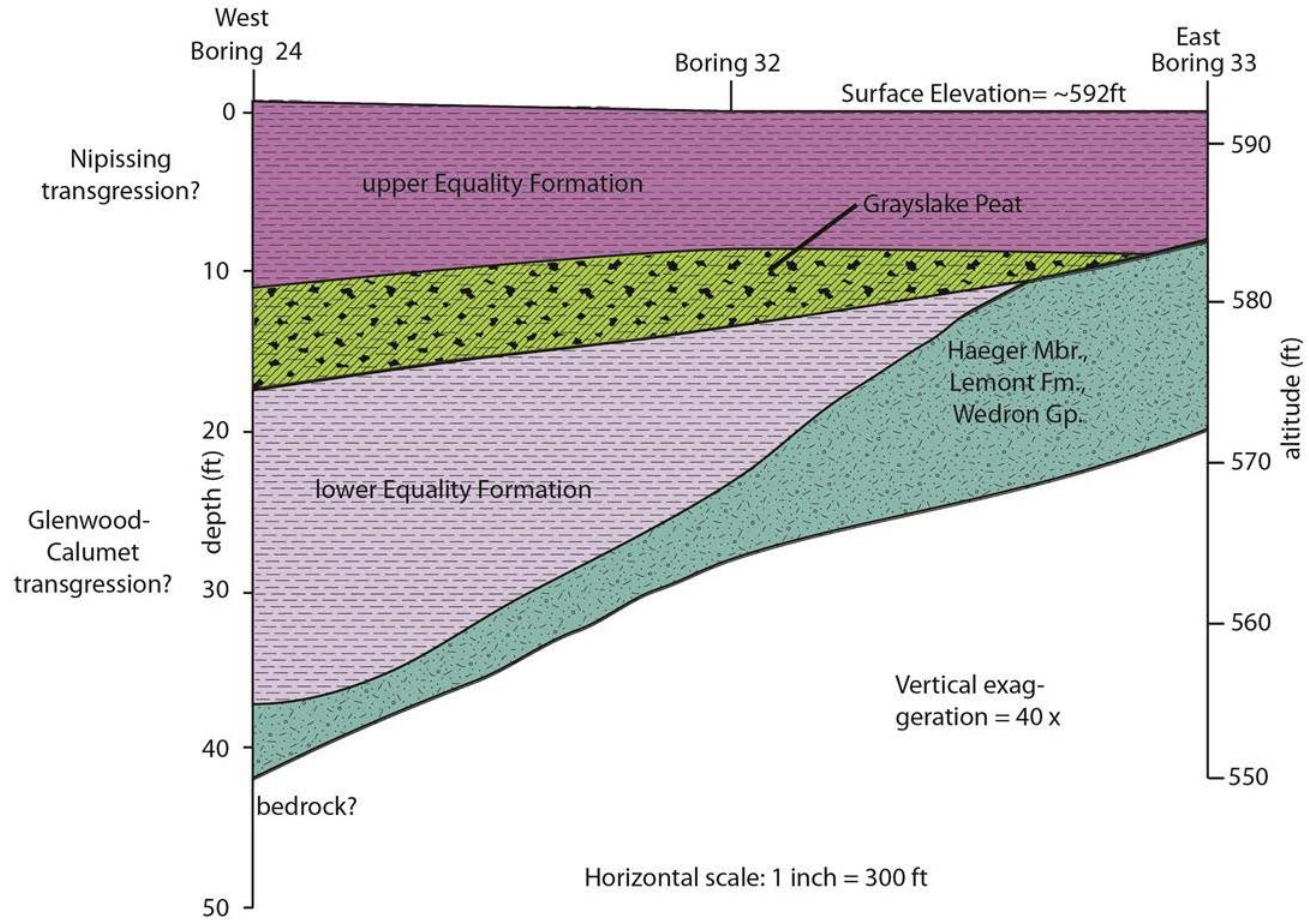
Aggregate area 22947.31 acres.
Scale of 40 chains to an inch.

Office of the Surveyor General for Illinois and Missouri,
Saint Louis, December 16th 1850

The above plat of Township N^o 37 North of the Base line, Range N^o 12 East of the 3^d principal Meridian is correctly constructed from the Original Field notes thereof, and the areas set down thereon are in conformity with those of the Original plat of said Township on file in this Office.

M. Lewis Clarke
Surveyor General

Cross section on campus of Moraine View Community College,
Palos Hills, Illinois



peat, marl; extremely soft



silt, clay, sand, some gravel; relatively soft



silty diamicton; decomposed rock fragments; extremely hard